

HUMAN ANATOMY
AND ANTHROPOLOGY



Bone  Clones[®]

OSTEOLOGICAL REPRODUCTIONS
EXCEEDING MUSEUM QUALITY SINCE 1993

2014

OSTEOLOGY

plays a dynamic role in many interdisciplinary studies involved in comparative anatomy.

Bone Clones® collections of skeletal remains are essential for courses in:

Human Anatomy • Physical, Biological and Evolutionary Anthropology • Forensic Anthropology • Skeletal Biomechanics • Locomotion Studies • Paleopathology • Primatology • Archaeology • Paleoanthropology • Zooarchaeology

Bone replications of hands, feet, femurs, pelvises, and leg and arm bones of numerous primates, are used in evaluating skeletal changes from non-human to human, and from one mode of locomotion to another.

Our selection of skulls and bones that show pathology and trauma has grown. See pgs. 32-37. Two discoveries in the last decade—one in the USA and one in Romania—are now available as Bone Clones quality reproductions. See pgs. 48-49





MY
ANTHROPOLOGY



An unanticipated moment of inspiration led to the idea that a perfectly reproduced skull of an endangered species could further understanding of that species. It also led to the recognition that to do so, the reproduction had to capture the original in exquisite detail. That is how our mission was defined two decades ago.

The very first Bone Clones® was a male gorilla skull. Now, twenty years later, there are several hundred Bone Clones® animal skulls, skeletons, eggs, claws, talons and individual bony parts of all sorts – representing extinct, endangered, protected, and plentiful species.

With Bone Clones® leading the way, naturalist educators and the public came to prefer replicas/casts to natural bone, and Bone Clones® became, and remains, the preferred brand.

Our sixteenth product was the skull of an adult human male. Very quickly we realized that a single Bone Clones® human skull would be insufficient to represent the diversity of, and interest in, human anatomy. One realization led to another and another, and soon we were casting a multiplicity of human skulls.

That was just the skull ... what about the rest of the human body? So, we produced one human skeleton, then another and another, and a juvenile skeleton and then another and another. A series of evolutionary steps landed us with a varied selection of primate, modern human, and fossil hominin replicas surpassing the size of our zoological product line.

This year, for the first time, we are printing separate catalogs – one covering our zoological line of products, and another covering human and non-human primates. If you receive one of our catalogs and wish to receive the other, please let us know.

From our first product to the latest, and from our first year to our 20th, we have been and remain committed to the original proposition: producing a reproduction "Virtually Indistinguishable From The Original."™

Signature



TABLE OF CONTENTS

Human Skeletons	2-9
Advanced Anatomy	10-17
Human Skulls.....	18-20
Hands, Feet & Femora	21-23
Child.....	24-29
Fetal	29-31
Pathology, Trauma & Forensics.....	32-47
Fossil Hominid.....	48-63
Non-Human Primates	64-79
Ordering	80
Index	81-83



Bone Clones® are playing a significant role in museum exhibits, and becoming a part of the modern collections of these museums. Realistic detail, durable materials, and an extensive and varied collection of Human and Zoological reproductions make them an ideal choice in lieu of real bone skeletal displays.



San Diego Museum of Man's permanent exhibit, Footsteps Through Time: Four Million Years of Human Evolution.

Bone Clones® On Exhibit

(To name a few)

Max-Planck Institut • Field Museum • American Museum of Natural History (*New York*)
 Apeneul Primate Park (*Netherlands*) • Aquarium of the Pacific (*Long Beach*)
 Amici del Museo di Scienze Naturali • Associazione Didattica Museale
 Musee De La Civilisation (*Canada*) • Museo del Desierto • Museo Nacional de Ciencias (*Spain*)
 National Museums Liverpool • Natural History Museum Vienna
 Natural History Museum (*UK*) • Yale Peabody Museum of Natural History • Academy of Taxidermy
 Ashoro Museum of Paleontology • Croatian Natural History Museum • Hayashibara Museum of Natural Sciences
 The Senckenberg Natural History Museum
 Maxwell Museum • Museum of Man • New York Hall of Science
 California Academy of Sciences • Harvard Museum of Comparative Zoology
 Los Angeles County Museum of Natural History • Royal Tyrrell Museum (*Canada*)
 Smithsonian Institution/National Museum of Natural History • Museum d'Histoire Naturelle (*France*)
 Museo de la Plata (*Argentina*) • National History Museum (*Denmark*)
 Peabody Museum of Archaeology • State Museum of Archaeology (*Germany*) • Australian Museum
 Moravske Zemske Muzeum (*Czech Republic*) • Paleontological Museum of China

All Bone Clones® products in this catalog are produced and handmade by Bone Clones, Inc. in the USA and are protected under State, Federal and International trademark laws. Photographs, text, descriptions or casts cannot be reproduced without the written consent of Bone Clones, Inc. Please note that prices are subject to change without notice.

B

Bone Clones Osteological Reproductions



TABLE OF CONTENTS

1-800-914-0091



Human Male Skeleton, Postcranial

Hyoid	SC-092-02	\$35.00
Clavicle	SC-092-01	\$20.00
Scapula	SC-092-04	\$85.00
Sternum	SC-092-05	\$52.00
Humerus	KO-092-H	\$56.00
Radius	SC-092-61	\$40.00
Ulna	SC-092-62	\$40.00
Coccyx	SC-092-59A	\$15.00
Arm, Disarticulated w/ Semi-Articulated Hand	SC-092-67S	\$220.00
Arm, Articulated w/ Articulated Rigid Hand	SC-092-67-AS	\$393.00
Hand, Articulated Rigid	H-02-M	\$135.00
Hand, Articulated Premium Flexible	H-01-M	\$189.00
Hand, Disarticulated	H-04-M	\$145.00
Hand, Semi-Articulated	H-03-M	\$115.00
Vertebra, Cervical Single	SC-092-10	\$20.00
Vertebra, Thoracic Single	SC-092-20	\$20.00
Vertebra, Lumbar Single	SC-092-30	\$20.00
Cervical Verts, Set of 7	SC-092-14C	\$132.00
Thoracic Verts, Set of 12	SC-092-26T	\$228.00
Lumbar Verts, Set of 5	SC-092-31L	\$95.00
Set of 3 Cervical, Thoracic, Lumbar	SC-092-10-SET	\$56.00
Vertebral Column	SC-092-31S	\$390.00
Rib T-1	SC-092-33C	\$18.00
Rib T-6	SC-092-33T	\$18.00
Rib T-12	SC-092-33L	\$18.00
Full Ribs, Set of 24	SC-092-56S	\$390.00
Innominate	SC-092-57	\$75.00
Pelvis, Disarticulated	KO-093-PD	\$198.00
Pelvis, Articulated	KO-093-P	\$140.00
Femur	SC-092-F	\$56.00
Sacrum	SC-092-77	\$48.00
Tibia	SC-092-69	\$45.00
Fibula	SC-092-70	\$36.00
Patella	SC-092-72	\$18.00
Leg, Articulated w/ Articulated Rigid Foot	SC-092-75-A	\$333.00
Leg, Disarticulated w/ Disarticulated Foot	SC-092-75S	\$215.00
Foot, Articulated Rigid	F-02-M	\$135.00
Foot, Articulated Premium Flexible	F-01-M	\$189.00
Foot, Disarticulated	F-04-M	\$145.00
Foot, Semi-Articulated	F-03-M	\$115.00
Humerus, Scapula, Clavicle Set	SC-092-HSC	\$150.00



Please visit our website for an extensive listing of available human skeletons and their associated postcranial elements and individual parts.



www.boneclones.com



Bone Clones Osteological Reproductions

SKELETON POSTCRANIAL

C



Stand Included

**Human Male European Skeleton,
Articulated**
5' 8" tall
SCM-192-A.....\$2,450.00

About the Maxwell Museum

The Maxwell Museum of Anthropology's Laboratory of Human Osteology, at the University of New Mexico, serves as a repository of human remains and includes prehistoric, historic, documented, and forensic remains. Information on the sex, age, population affinity, and cause of death is available for the majority of these individuals. A portion of the sales goes to further their work.

Please note that specimens from the Maxwell Collection can only be sold to recognized educational institutions and professionals associated with educational institutions.



SC-092-02 Hyoid	\$35.00
SCM-192-02 Scapula	\$94.00
SCM-192-01 Clavicle.....	\$22.00
SCM-192-03 Sternum.....	\$58.00
SCM-192-08 Cervical Vertebra.....	\$22.00
SCM-192-16 Radius	\$44.00
SCM-192-17 Ulna	\$44.00
SCM-192-20 Sacrum	\$53.00
SCM-192-18 Tibia.....	\$50.00
SCM-192-19 Fibula.....	\$40.00



**Comparative Set,
Human Adult Male
European**
COMP-M-407-SET.....\$170.00



MAXWELL MUSEUM OF ANTHROPOLOGY

The license to cast from originals in the Maxwell Museum's collection provides the means for researchers in distant locations to study numerous and diverse osteological characteristics. The addition of European male and female human skeletons expands Bone Clones® selection of expertly produced human skeletons.

www.boneclones.com/catalog-human-skeletons.htm
for a complete listing of available human skeletons.



Human Male European

Skeleton of a documented 34-year-old European male. The cause of death was a gunshot wound to the right arm and chest. This individual stood 5'8" and weighed 185 pounds at the time of death. The cranial features are consistent with an individual of European ancestry.



**Human Male European Half Skeleton, Disarticulated
with Calvarium Cut Skull BCM-892-C**

Skeleton provided with hand and foot completely disarticulated.

SCM-192-DH.....\$1,050.00



Human Male European Skeleton, Disarticulated

One hand and foot rigidly articulated,
one hand and foot disarticulated.

SCM-192-D.....\$1,550.00



www.boneclones.com



Bone Clones Osteological Reproductions

**MALE EUROPEAN
MAXWELL COLLECTION**

3



Human Female European Skeleton, Articulated
 5' 6" tall
SCM-191-A.....\$2,450.00

**Human Female European
 Postcranial**

Bone Clones is grateful to the Maxwell Museum for allowing us to select specimens for reproduction from their valuable collection and granting us exclusive casting rights to these pieces. A portion of the sales goes to further their work.

Please note that specimens from the Maxwell Collection can only be sold to recognized educational institutions and professionals associated with educational institutions.



SC-211-02 Hyoid	\$35.00
SCM-191-02 Scapula	\$94.00
SCM-191-01 Clavicle.....	\$22.00
SCM-191-03 Sternum.....	\$58.00
SCM-191-08 Cervical Vertebra.....	\$22.00
SCM-191-16 Radius	\$44.00
SCM-191-17 Ulna	\$44.00
SCM-191-20 Sacrum	\$53.00
SCM-191-18 Tibia.....	\$50.00
SCM-191-19 Fibula.....	\$40.00



Comparative Set, Human Adult Female European
COMP-M-408-SET.....\$170.00



MAXWELL MUSEUM OF ANTHROPOLOGY

<http://boneclones.com/catalog-human-post-cranial.htm>
for a complete listing of available human post-cranial products



All postcranial parts of our human skeletons are available separately and can be found on the specific skeleton page on our site, as well as listed on this category page:

Human Female European

Skeleton of a documented 41-year-old European female. The cause of death was heart failure due to drug overdose. This individual stood 5'6" and weighed 133 pounds at the time of death. The cranial features are consistent with an individual of European ancestry.



Human Female European Half Skeleton, Disarticulated with Calvarium Cut Skull BC-150
Skeleton provided with hand and foot completely disarticulated.
SCM-191-DH.....\$1,050.00



Human Female European Skeleton, Disarticulated
One hand and foot rigidly articulated, one hand and foot disarticulated.
SCM-191-D.....\$1,550.00



www.boneclones.com



Bone Clones Osteological Reproductions

**FEMALE EUROPEAN
MAXWELL COLLECTION**

5



Human Male Asian Skeleton, Articulated
6 feet tall
SC-092-A.....\$2,350.00

Stand Included



Human Adult Male Arm with Scapula, Articulated w/ rigid hand
SC-092-67-AS ...\$393.00



Human Adult Male Leg, Articulated w/ rigid foot
SC-092-75-A\$333.00



Premium Skeleton Case
Accommodates Bone Clones® disarticulated skeleton or 6 skulls. Hard case construction with black vinyl covering.
26" L, 15" W, 8 1/2" H
S-16 \$189.00



Human Male Asian Skeleton, Disarticulated
One hand and foot rigidly articulated, one hand and foot disarticulated.
SC-092-D.....\$1,400.00

Human Male Half Skeleton, Disarticulated with Calvarium Cut Skull BC-212
Skeleton provided with hand and foot completely disarticulated.
SC-092-DH\$969.00

See our website for postcranial list and more information.



6

Bone Clones Osteological Reproductions



MALE ASIAN SKELETON

1-800-914-0091





**Human Female Asian Skeleton,
Disarticulated**

One hand and foot rigidly articulated,
one hand and foot disarticulated.
SC-211-D\$1,400.00

**Human Female Half Skeleton,
Disarticulated**

with Calvarium Cut Skull BC-150
Skeleton provided with hand and
foot completely disarticulated.
SC-211-DH\$969.00



See our website for
postcranial list and
more information.



**Human Adult Female Arm
with Scapula, Articulated
w/ rigid hand
SC-211-67-AS ...\$393.00**



**Human Adult Female Leg,
Articulated w/ rigid foot
SC-211-75-A.....\$333.00**



**Skeleton Case
Corrugated Plastic**
Accommodates Bone Clones®
disarticulated skeleton or
6 skulls. Light weight and
economical.
26" L, 15" W, 8 1/2" H
S-93 \$89.00



Human Female Asian Skeleton, Articulated
5 feet tall
SC-211-A.....\$2,350.00



www.boneclones.com



Bone Clones Osteological Reproductions

FEMALE ASIAN SKELETON

7

Pristine examples of adolescent skeletons are rare finds in teaching collections. The developing skeleton is very different from adult skeletons -- the numerous ossification centers and growth plates can dramatically change the appearance of individual bones. Learning how to assess and gauge the degree of skeletal maturation is a very basic but critical skill for students of anatomy. Thus, having such a specimen available for laboratory teaching purposes is invaluable. Furthermore, as even the busiest forensic osteologists and anthropologists only rarely encounter the skeletonized remains of adolescents, this specimen may serve as a useful reference tool during the evaluation of individual cases. The totality of features of this specimen, including those of the skull, dentition, epiphyseal union and bone length, suggests an age between 15 and 18 years. While race and sex cannot be reliably determined on subadult remains, the features of race of this individual are overwhelmingly Asian. Sexual attributes are suggestive but not diagnostic of male sex.



Stand Included



**Human Adolescent Skull
Calvarium Cut**
8 1/4" L, 5 1/2" W, 6" H
BC-305 \$259.00



Human Adolescent Skull
8 1/4" L, 5 1/2" W, 6" H
BC-301 \$210.00



**Human Adolescent
Half Skeleton, Disarticulated
with BC-305 Calvarium Cut Skull**
Skeleton provided with hand and
foot completely disarticulated
SC-301-DH \$1,420.00



See our website
for postcranial
list and more
information.

**Human Adolescent
Skeleton,
Articulated**
5' 1/2" tall
SC-301-A \$3,225.00



**Human Adolescent Skeleton,
Disarticulated**
One hand and foot rigidly articulated,
one hand and foot disarticulated.
SC-301-D \$2,025.00

ROBUST ASIAN SKELETON

This skeleton is exemplary of an extremely muscular body. The deltoid tuberosities are large and the humeral torsion is impressive. All of the bones are very dense. Educators may want to use this skeleton, along with a more gracile male skeleton, to demonstrate the range of male forms and the changes that can take place with increased muscle mass. The skull displays traits overwhelmingly associated with maleness. These include a massive jaw, square chin, large supraorbital ridge, large mastoid processes, and projecting occipital protuberance. The estimated age of upper 20's (range 23-35) is based on the fact that developmental changes are complete but degenerative changes have barely begun.



Human Male Asian, Robust
8 1/2" L, 6 1/4" W, 6 3/4" H
BC-287.....\$239.00



Human Male Asian Skeleton, Robust, Disarticulated
One hand and foot rigidly articulated, one hand and foot disarticulated.
SC-287-D.....\$1,400.00



Human Male Asian Half Skeleton, Robust, Disarticulated
Skeleton provided with hand and foot completely disarticulated
SC-287-DH.....\$990.00



See our website for
postcranial list and
more information.



Stand Included

Human Male Asian Skeleton, Robust, Articulated
5' 6" tall
SC-287-A.....\$2,350.00



www.boneclones.com

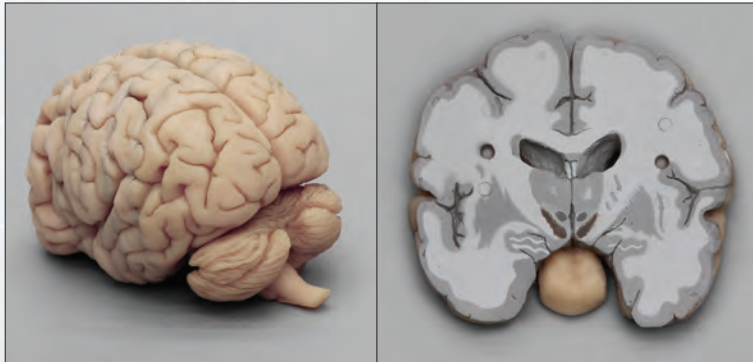


Bone Clones Osteological Reproductions

ROBUST ASIAN SKELETON

9

Bone Clones® Exclusive Casting of the Brain

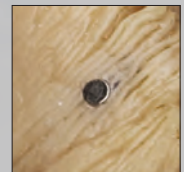


The ©Human Brain in Multiple Frontal (Coronal) Sections offers an innovative way to study the structure of the brain. Because of the three-dimensional characteristics of the adult brain, the appearance of gross neuronal structures differs depending on the plane of section. Current diagnostic tests available allow for various views of structures in the same patient. Given that neurologic anatomical markers are often used to confirm suspected diagnoses, students in Health Sciences must become adept at deciphering neurologic structures from various views. We are proud to offer the Bone Clones® Human Brain in frontal (coronal) section, which has been created in consultation with Cara Davies, Ph.D. Dr. Davies has also created an extensive lesson plan, which is provided with a KO-515 purchase.

Human Brain
Multiple Frontal Sections
KO-515..... \$775.00



Discreet built-in magnets and push-fit mating surfaces make it easy to fit and hold sections of the brain firmly together.



Human Analysis Reports



See our website
for more
information.

Informative evaluation reports are available for most of our human skeletons, skulls and some postcranial items. These reports were prepared by Evan Matshes, M.D., Karen Ramey Burns, Ph.D., forensic anthropologist, or Tori D. Randall, Ph.D., biological anthropologist and Curator of Physical Anthropology, San Diego Museum of Man

The reports contain sections regarding general characteristics of the specimen, sections concerning the age, sex and race, with a clear indication of the non-metric measures that went into the determination (or inability to make a determination) of such. Pathologic or traumatic features are also assessed.

A listing of reports available can be found on our website under the **Human Analysis Reports** category. A printed version of the 4-8 page report is sent with each Bone Clones® purchased for which a report exists.

Advice and review by clinical anatomists, forensic anthropologists and others have enabled us to concentrate on reproducing the osteological elements that are essential for understanding the complex anatomy of the human skull. Well-defined sutures, foramina, cranial nerves, cranial arteries, and other fine neural passages of the head distinguish Bone Clones® Advanced Anatomy Skulls from other available models of the human skull. On the following pages you will find a number of dissected skull replicas of incomparable quality, suitable for medical study.



Human Male and Female Calvarium Cut Comparative Set

These upgraded calvarium cut skulls accurately reproduce the internasal and median palatine sutures, and all foramina (lacerum, spinosum, ovale, stylomastoid, ethmoidal and that of the cribriform plate). Other details include the dorsum sellae and a clear distinction between the superior-posterior vomer and the body of the sphenoid. Removable calvarium and spring-hinged jaw.

BC-150-212.....\$488.00

Human Male European, Calvarium Cut

7 3/4" L, 5 1/2" W, 6 1/2" H

BC-212.....\$259.00

Stand

S-BC-212.....\$35.00

Human Female European, Calvarium Cut

7 1/2" L, 4 3/4" W, 6 1/4" H

BC-150.....\$259.00

Stand

S-BC-150.....\$35.00

Human Brain KO-510

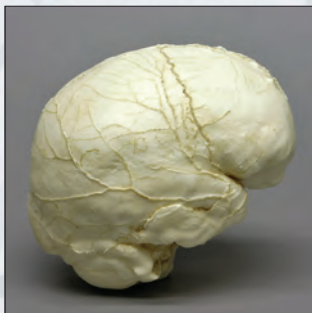
(Fits Skulls BC-150 and

BC-212)\$165.00



About Calvarium Cut Skulls

Bone Clones' production techniques allow for the representation of the following patent foramina at an economical price: optic canal, superior orbital fissure, inferior orbital fissure, foramen rotundum, foramen ovale, foramen lacerum, jugular foramen, hypoglossal canal, carotid canal.

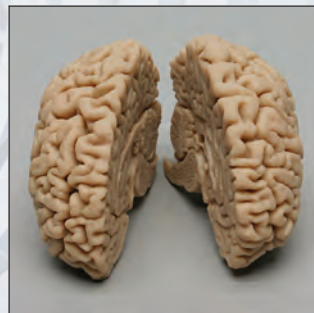


Human Skull Endocast

Endocast from our BC-092.

7" L, 5 1/2" W, 5" H

KO-092E.....\$129.00



Human Brain

(Fits BC-092 Skull)

6" x 5"

KO-092.....\$165.00



Human Male Asian, Calvarium Cut Skull with Brain and Stand

8 1/2" L, 5 1/2" W, 8 1/2" H

BC-092-Set.....\$398.00

BC-092(skullonly)....\$240.00



www.boneclones.com



Bone Clones Osteological Reproductions

ADVANCED ANATOMY

11

Advanced Anatomy

Bone Clones offers this one-of-a-kind product in response to the need expressed by teachers, surgeons and other professionals for whom the study of the temporal bone is of vital importance. The complex temporal bone has been cut in three pieces and hinged together, while retaining the detail to reveal eight patent foramina and other intricacies. Ideal for instruction of the inner workings of the ear, this product is a response to the demand for an educational tool targeting patients and students alike.

Human Temporal Bone, Hinged

(Stand Included)

3 ¾" L, 2 ½" W, 3 ½" H (off stand)

8" H (on stand)

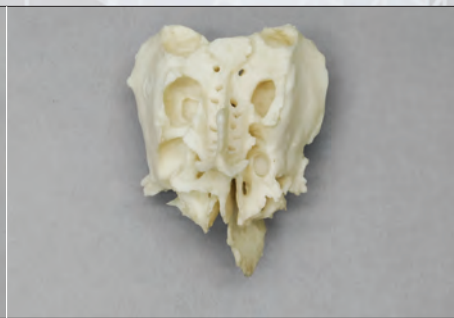
KO-320.....\$210.00



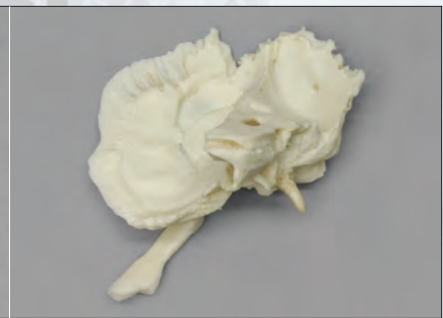
Human Set of 6 Ossicles, L & R
(Malleus, Incus, Stapes)
KO-234-SET\$79.00



1. Human Sphenoid Bone in Plastic Case
KO-191-001.....\$145.00



2. Human Ethmoid Bone in Plastic Case
KO-191-002.....\$128.00



3. Human Temporal Bone in Plastic Case
KO-191-009.....\$136.00

**Human Sphenoid, Ethmoid,
and Temporal Bone Set**
Set reveals all foramina, canals
and other minute details.
KO-191-020-SET.....\$379.00



Articulated and Disarticulated Bone Clones® Human Medical Study Skulls

For advanced study of foramina, canals, sutures and processes

**Both products include neuroanatomical supplemental material:
2 charts and 1 poster by Noel Boaz Ph.D., M.D. & David Kronen**

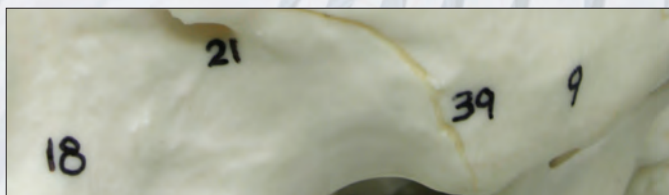
Our premier anatomy skull shows all the foramina, canals, sutures and fine details of bone edges of a real skull. Ideal for advanced study, foramina are bristle-patent, making student exploration of perforating cranial nerve branches and blood vessels possible. Comprising the 22 cranial bones (and 32 removable teeth) of our completely disarticulated version, our articulated skull is cradled on a stand, with parietal bones separated, giving access to the interior cranium.



Human Medical Study Skull, Disarticulated
Custom case S-92 included.
BC-191-D\$1,150.00



Human Medical Study Skull, Articulated
Custom case S-91 and stand included.
BC-191-A..\$1,350.00



Human Male European Skull with Calvarium Cut, Numbered
BC-293 provides 79 numbered landmarks and a corresponding printed list.
7 3/4" L, 5 1/2" W, 6 1/2" H
BC-293.....\$295.00



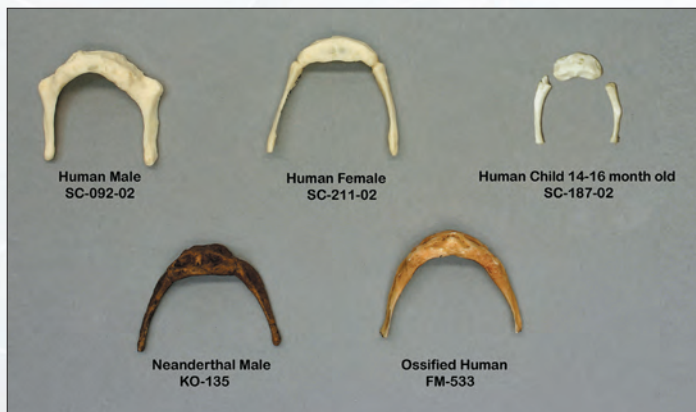
www.boneclones.com



Bone Clones Osteological Reproductions

ADVANCED ANATOMY

13



Set of 5 Hyoids
Includes modern humans and Neanderthal.
KO-111-SET\$165.00



Set of 32 Human Adult Male Teeth
KO-164-SET..\$295.00



Set of 32 Human Adult Female Teeth (All Removeable)
KO-191-018.....\$290.00



Set of 11 Primate Hyoids
KO-110-SET\$325.00

- | | |
|---|---------|
| 1. KO-106 Male Gorilla | \$40.00 |
| 2. KO-105 Female Gorilla..... | \$40.00 |
| 3. KO-107 Male Orangutan | \$40.00 |
| 4. KO-108 Female Chimpanzee | \$40.00 |
| 5. KO-102 Male Chimpanzee | \$40.00 |
| 6. FM-533 Elderly Human Ossified | \$39.00 |
| 7. SC-092-02 Male Human..... | \$35.00 |
| 8. SC-211-02 Female Human | \$35.00 |
| 9. SC-187-02 Human Child 14-16-month-old. | \$33.00 |
| 10. KO-135 Neanderthal..... | \$45.00 |
| 11. KO-109 Siamang..... | \$40.00 |

Magnetic Osteological Teaching Skull, 22-pieces, color or natural



EZ-002
(color)
\$369.00

Includes an excellent instructional video that identifies each bone by name and clearly demonstrates how the bones fit together. This video can also be viewed at:
www.boneclones.com/EZ-001.htm

EZ-001
(natural)
\$339.00



Designed to facilitate identification of bones individually and in context, this affordable, durable plastic skull developed by a European company has built-in magnets and push-fit mating surfaces which click together easily, making this an excellent teaching tool for introductory human anatomy courses. **Imported.**

Advanced Anatomy

BC-267-H and BC-267-HP present a half version of the skull cut sagittally. Such a cut permits study of usually hard-to-see, if not invisible, aspects of the skull, including nasal passages, sinus cavities, and grooves for branches of meningeal vessels.



1. Human Half Skull, Sagittal Cut, Color-coded
7 ½" L, 2" W, 7 ½"H
BC-267-HP\$450.00

2. Human Half Skull, Sagittal Cut
7 ½" L, 2" W, 7 ½"H
BC-267-H\$350.00

Stand for Human Half Skull, Sagittal Cut
S-BC-267.....\$35.00

Human Female European
7-piece Color-Coded Study Skull
(Stand Included)
BC-224.....\$750.00

Human Female European
7-piece Study Skull (Not Shown)
BC-219.....\$690.00

BC-219 and BC-224 are segmented into 7 parts in order to facilitate study of the internal sections of the cranium. Designed with removable bone groupings: sphenoid, ethmoid, and vomer to be examined thoroughly, the details of which illustrate all of the pertinent nerve paths—precisely equivalent to real bone.



We thank the following institutions for use of original materials for casting

Academy of Natural Sciences of Philadelphia • Babiarcz Institute of Paleontological Studies, Inc. • Black Hills Institute of Geological Research
Charleston Museum • Harvard Museum of Comparative Zoology • Dr. Ralph Holloway • Los Angeles County Museum of Natural History
Maxwell Museum of Anthropology • Philadelphia Zoo • San Diego Museum of Man • San Diego Natural History Museum • San Diego Zoo
Santa Barbara Museum of Natural History • Museum of Osteology • The Estate of Grover Krantz • The National Aquarium
Triebold Paleontology • U.C. Davis Body Donation Program • Racoviță Institute of Speleology

We are always mindful of the numerous Educators and Consultants who enthusiastically offer Bone Clones invaluable pertinent advice so that we can make our products the best possible. There is no doubt that their professional interest and feedback makes a great contribution to our company.



www.boneclones.com



Bone Clones Osteological Reproductions

ADVANCED ANATOMY

15



Bone Clones®

www.boneclones.com
1-800-914-0091

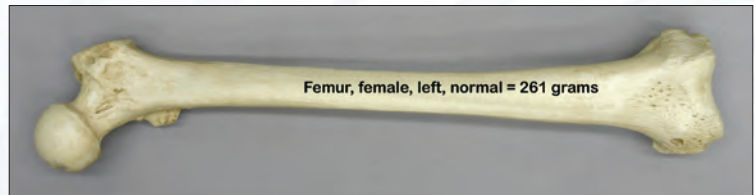
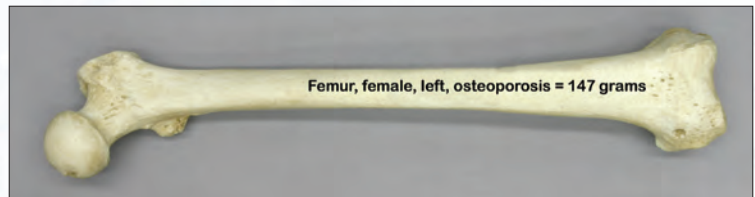


Human Cervical Vertebrae and Occipital Assembly

4" W x 9" H

KO-249.....\$186.00

Human Cervical Vertebrae and Occipital Assembly includes C1 through C7 with the occipital bone. This assembly allows educators and practitioners to point out the details of the architecture of each cervical vertebra.



Human Adult Female Femur, Osteoporosis, Comparative Set
15 3/4" long

KO-170-SET.....\$120.00

(also sold individually)

This comparative pair of femurs illustrates that the condition created by osteoporosis is not detectable by merely looking at the outside of the bone. A bone density test would reveal the great difference between the healthy (261g) and osteoporotic bone (147g).



Bone Box – Left Side Only (Case S-82 Included)

Available for male or female, each kit comprises a selection of key bones from an Adult Skeleton (greater than 35 years of age), including long bones, the fifth rib, key vertebrae, rigidly articulated hand and foot, hyoid, clavicle, scapula, sternum plate, innominate, sacrum, coccyx and patella. The kit also provides an exceptionally detailed skull featuring a removable calvarium and spring-hinged jaw. Detailed enough to offer an excellent model for teaching anatomy to medical, dental, and nursing students. Plastic carrying case S-82 included.



Bone Box - Female, Left Side Only

COMP-110-F\$728.00

(shown)

Bone Box - Male, Left Side Only

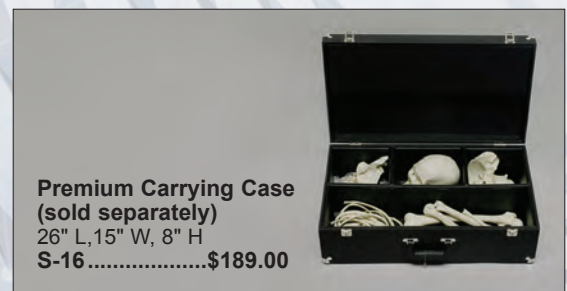
COMP-110-M.....\$728.00

(not shown)

Skeleton Case, Corrugated Plastic

17 1/2" L, 12" W, 10" H

S-82 (included)

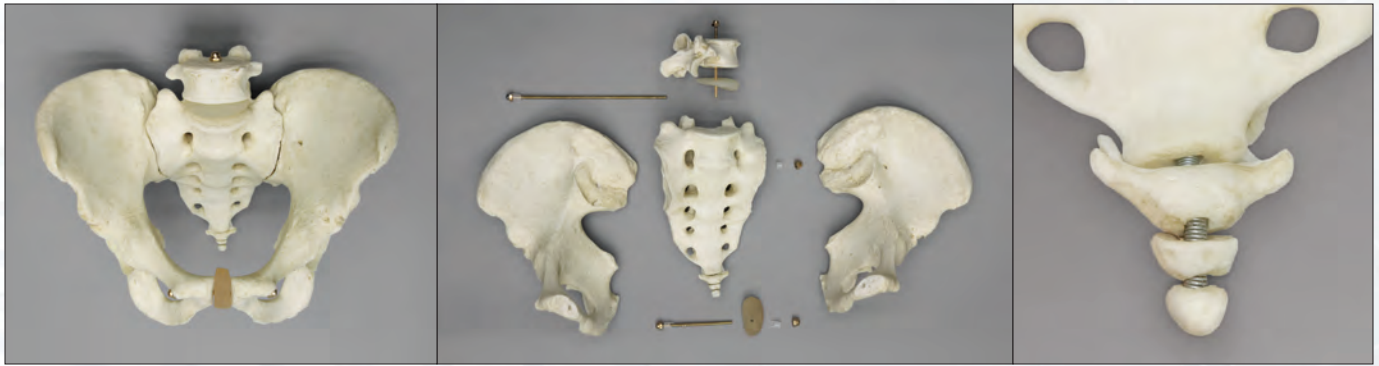


Premium Carrying Case
(sold separately)

26" L, 15" W, 8" H

S-16\$189.00





Detachable Pelvis with Flexible Coccyx, Male

Innominates, sacrum and L5 are separable. Construction with bolts makes assembly simple.

10" x 8"

KO-505-FLEX.....\$238.00



1. Human Female Vertebral Column with Sacrum & Coccyx, Flexible (Stand Included)
26" H
KO-321 \$620.00

2. Human Female Vertebral Column with Pelvis, Flexible (Stand Included)
28" H
KO-322 \$690.00

3. Human Shoulder Joint (scapula, clavicle & partial humerus)
KO-331 \$139.00

4. Human Hip Joint (innominate & partial femur)
KO-332 \$139.00

5. Human Knee Joint (patella, partial femur, tibia & fibula)
KO-333 \$119.00

6. Human Flexible Foot Joint (premium foot, partial tibia & fibula)
KO-334 \$260.00

7. Human Flexible Hand Joint (premium hand, partial radius & ulna)
KO-335 \$260.00

8. Human Elbow Joint (partial humerus, radius & ulna)
KO-337 \$98.00



www.boneclones.com



Bone Clones Osteological Reproductions

ADVANCED ANATOMY

17

Premium Human Skulls

Bone Clones® are an excellent alternative to natural bone skulls and skeletons. We are very selective in the originals we cast from, and concentrate on retaining the organic elements that are essential for study.

Teaching institutions are turning to replicas for elementary as well as advanced instruction in human anatomy. Bone Clones, Inc produces an extensive selection of human skulls ranging from prenatal to elderly and covering sex and ancestry differences, as well as trauma and pathology.

As the availability of natural bone skulls diminishes, Bone Clones® are being selected by many universities for their advanced teaching programs. Our dissected and segmented skulls retain incredible details of the internal sections of the cranium.



Human Male Asian, Robust
8 ½" L, 6 ¼" W, 6 ¾" H
BC-287\$239.00



Female American Indian
7 ½" L, 5 ½" W, 6 ¾" H
BC-213\$255.00



Male Australian Aboriginal
8 ¼" L, 5 ¼" W, 8 ¼" H
BC-031\$230.00



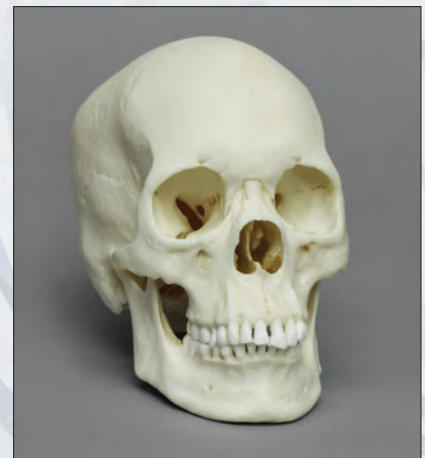
Male African
7 ¾" L, 4 ¾" W, 6 ½" H
BC-110\$220.00



Female Asian
8" L, 5" W, 5 ¾" H
BC-149\$220.00



Male Asian
8 ½" L, 5 ¼" W, 8" H
BC-016\$220.00



Female Asian
8 ¼" L, 4 ¾" W, 6" H
BC-211\$220.00



Female European
7 1/2" L, 4 3/4" W, 6 1/4" H
BC-133\$220.00



Male European
7 1/2" L, 5" W, 7 1/2" H
BC-107\$220.00



Female African-American
8" L, 5" W, 6" H
BC-178\$230.00



Male African-American
9 1/2" L, 5 1/2" W, 7" H
BC-203\$230.00



Male Asian
8 1/2" L, 5" W, 6 1/2" H
BC-253\$220.00



Female Asian, Economy
6 1/2" L, 4 1/2" W, 6 1/4" H
BC-059E\$135.00



Male European
7 3/4" L, 5 1/2" W, 8 1/2" H
BCM-892\$245.00



Female European
8 1/2" L, 5" W, 8 1/4" H
BCM-891\$245.00



Male Polynesian
8" L, 5 1/2" W, 8" H
BC-302\$290.00



Sets of Human Male and Female Skulls

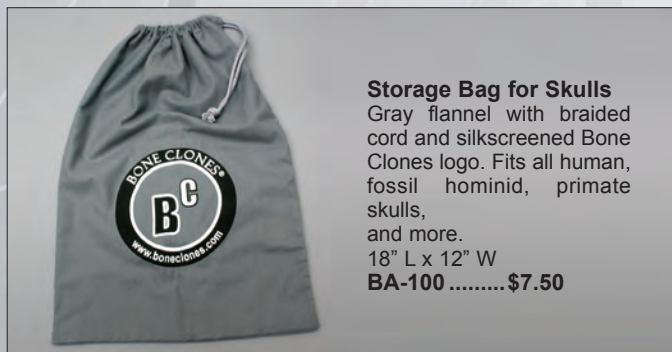


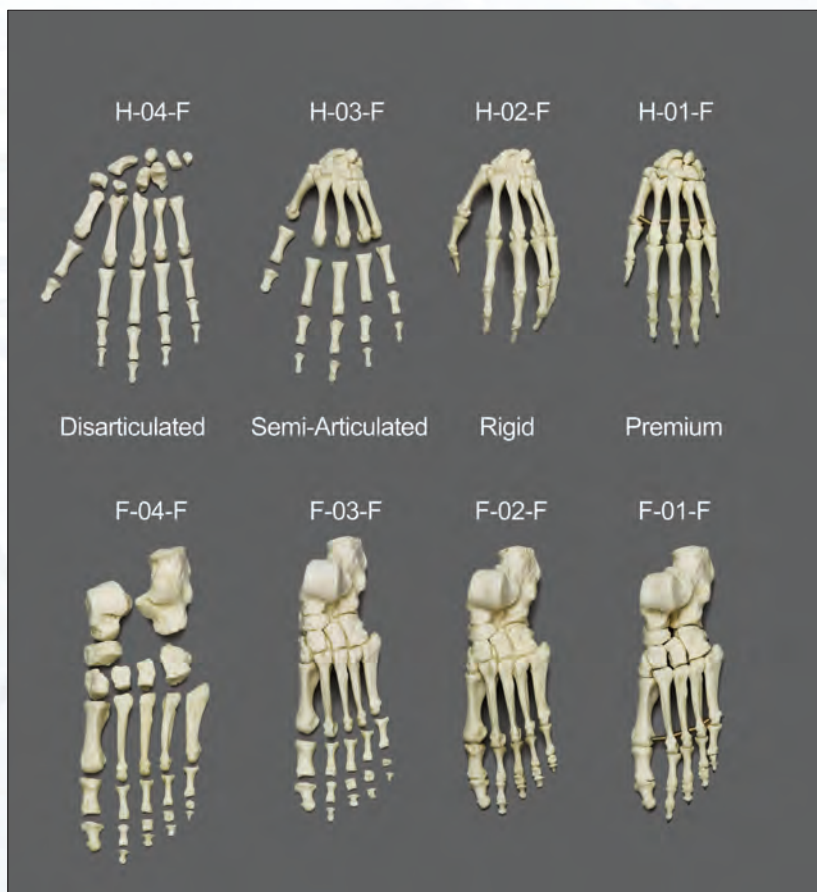
Bone Clones offers a broad range of adult human skulls. The collection permits an examination of cranial traits that are suggestive of geographical ancestry (racial affinity) and sex. Individuals with ancestral ties to a particular geographic region of the world sometimes possess cranial features indicative of that background. Important traits include palatal shape, maxillary incisor shape, subnasal prognathism, breadth of nasal aperture, shape of eye orbits and zygomatic form. Key features for sex analysis include size of mastoid process, shape of chin, angle of ramus, shape and contour of forehead, among others. If a skull exhibits a particular collection of traits, a forensic anthropologist may be able to suggest the racial affinity and sex of the unidentified remains.

Set of 3 Human Male Skulls
African, Asian, and European
COMP-121-SET\$625.00

Set of 3 Human Female Skulls
African, Asian, and European
COMP-122-SET\$625.00

Set of 6 Male & Female Skulls
Includes all skulls from
the sets shown above.
COMP-120-SET\$1,250.00





Female (Shown)

H-04-F...\$145.00	H-03-F...\$115.00	H-02-F...\$135.00	H-01-F...\$189.00
F-04-F...\$145.00	F-03-F...\$115.00	F-02-F...\$135.00	F-01-F...\$189.00

Male (Not Shown)

H-04-M...\$145.00	H-03-M...\$115.00	H-02-M...\$135.00	H-01-M...\$189.00
F-04-M...\$145.00	F-03-M...\$115.00	F-02-M...\$135.00	F-01-M...\$189.00

This Beauchene-style Hand and Foot is designed so that the individual bones slide away from one another when one pulls on the nylon wire. This allows for the study of the articulating surfaces of each of the bones.



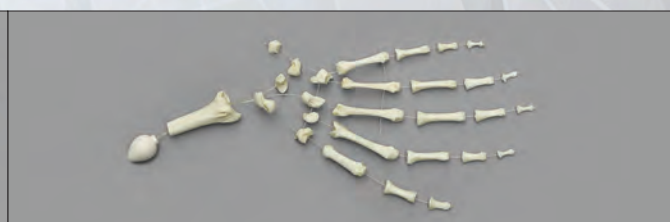
**Human Adult Magnetic Hand
KO-211-MH\$209.00**



**Human Adult Magnetic Foot
KO-211-MF\$209.00**



**Premium Hand, Beauchene-style
Human Adult
KO-338-KB.....\$209.00**



**Premium Foot, Beauchene-style
Human Adult
KO-339-KB.....\$209.00**



Axial & Appendicular Skeleton

Each bone of the human body, two hundred and six in all, form the structure that protects the complex biological systems of the human body.

The human skeleton is cleverly divided in two major segments; each segment serving crucial functions. The axial skeleton is the center portion. It includes the skull, the hyoid, the vertebral column, ribs, sternum, sacrum and coccyx. This axis provides structure and strength for upright function, and protects the vital organs. Twenty-two cranial bones - sutured in impressive fashion - protect the brain and other delicate organs of the skull. The appendicular skeleton is composed of the clavicles, scapulas, innominates and the upper and lower limbs (appendages). Simply put - arms make it possible to manipulate objects and legs are the key to our mobility.

Each bone of each Bone Clones® skeleton can be purchased individually – and sets of bones or articulated sections (like arms and legs) are also available. A more complete listing of postcranial parts for each of our human skeletons is available on our website and many in this catalog.

Bone Clones® are the premiere osteological reproductions for use in comparative anatomy studies.





1. Human Adult Male Femur, African
FM-401 \$62.00
2. Human Adult Female Femur, African
FM-402 \$62.00
3. Human Adult Male Femur, European
SCM-192-21 \$62.00
4. Human Adult Female Femur, European
SCM-191-21 \$62.00
5. Human Adult Male Femur, Asian
SC-092-F \$56.00
6. Human Adult Female Femur, Asian
SC-211-F \$56.00

Bone Scaling Femur Set

Courses are being introduced in Physics and Life Science Departments specifically geared to providing pre-medical and life science students the type of foundation in biomechanics that will better inform their future careers. Understanding the physics of skeletal anatomy is one of the areas being added to course studies toward this end. Resurgent interest in Galileo's proposition on bone scaling, for example, is being tested and applied in many courses, with the aim of providing a better understanding of the relationship between physics and biology. Toward this aim, this Bone Clones® Bone Scaling Set was developed by Suzanne Amador Kane and Peter Love for use in the Haverford College Physics Department.



Comparative Bone Scaling Set of 12 Femora
COMP-115.....\$729.00

1. SC-125-21 Horse\$185.00
2. SC-018A-23 Sabertooth Cat.....\$120.00

3. SC-211-F Human Adult Female\$56.00
4. SC-027-21 Komodo Dragon\$50.00
5. SC-043-21 Harpy Eagle\$40.00
6. SC-165-21 Kiwi\$40.00
7. SC-026-21 Platypus\$40.00

8. SC-265-21 Spider Monkey\$50.00
9. SC-137-21 Rhesus Macaque.....\$50.00
10. SC-069-21 Vervet Monkey\$50.00
11. SC-094-F Goliath Frog\$29.00
12. SC-049-21 Flying Lemur\$40.00



www.boneclones.com



Bone Clones Osteological Reproductions

FEMORA

23

About Child Skulls

The preferred method for estimating the age at time of death is dental morphology. The appearance of particular bones, the fusion of others, as well as the length of long bones, are also important indicators of age.

For the sake of simplicity, we refer to these skulls by a specific age. We realize that it is not possible to attribute so particular an age to a skull and that assigning a range may be much more accurate. In fact, such a range has been assigned to each skull in a report prepared by Evan Matshes, M.D. and co-author of *Human Osteology and Skeletal Radiology*. These reports are available on the website and to all who purchase the associated product.

For additional information, please see www.boneclones.com/human-analysis-reports

1. 4-month-old Child
5 ½" L, 4 ¼" W, 4 ½" H
BC-256\$220.00

2. 1-year-old Child, Calvarium Cut
6" L, 4 ¾" W, 4 ¾" H
BC-280\$249.00

3. 1-year-old Child
6" L, 4 ¾" W, 4 ¾" H
BC-274\$220.00

4. 14-month-old Child
5 ½" L, 4 ¾" W, 4 ½" H
BC-187\$220.00

5. 15-month-old Child
6" L, 4 ½" W, 5 ¾" H
BC-111\$220.00

6. 16-month-old Child
6 ¼" L, 5" W, 5" H
BC-209\$220.00

7. 18-month-old Child
6 ¼" L, 4 ¾" W, 5" H
BC-216\$220.00

8. 2-year-old Child
6 ½" L, 4 ½" W, 5 ¼" H
BC-275\$220.00



About Deciduous Teeth

This beautifully cast model replica of an entire set of deciduous (juvenile) teeth is from a 4-year-old child. No adult teeth are present. The evaluation of skeletonized remains from children can be challenging, particularly when fragmented or co-mingled with the remains of other children, and sometimes, adults. Having a solid understanding of tooth anatomy and morphologic differences present between adult and child tooth forms can be very important.

Adult male and female teeth available.
See page 14.

**9. 4-year-old Child Deciduous Teeth,
Set of 20**
KO-247-SET.....\$290.00

10. 4-year-old Child
7" L, 4 3/4" W, 5" H
BC-247.....\$210.00

11. 3-year-old Child
6 1/2" L, 4 3/4" W, 5 1/4" H
BC-210.....\$220.00

12. 6-year-old Child
7" L, 4 3/4" W, 5 3/4" H
BC-268.....\$220.00

13. 8-year-old Child
7 1/4" L, 5" W, 5 1/4" H
BC-276.....\$220.00

14. 9-year-old Child
7 1/2" L, 5" W, 5 1/2" H
BC-277.....\$220.00

**15. 12-year-old Child,
Dentition Exposed**
7" L, 4" W, 6" H
BC-135.....\$249.00

16. 13-year-old Child
7 1/2" L, 5" W, 5 3/4" H
BC-270.....\$220.00





Human Five-Year-Old Skeleton

The entire skeleton SC-116 5-year-old child was found in Morocco and is dated to 6,000 years ago.

1. 5-year-old Child, Archaic
6 3/4" L, 4 1/4" W, 6 3/4" H
BC-116\$220.00

2. 5-year-old Child, Calvarium Cut
6 1/2" L, 4 1/2" W, 5 1/2" H
BC-188 \$249.00

3. 5-year-old Child, Mixed Dentition Exposed, Calvarium Cut
6 1/2" L, 4 1/2" W, 5 1/2" H
BC-183\$289.00

4. 5-year-old Child, Mixed Dentition Exposed
6 1/2" L, 4 1/2" W, 5 1/2" H
BC-189\$249.00

5. 5-year-old Child
6 1/2" L, 4 1/2" W, 5 1/2" H
BC-190\$220.00

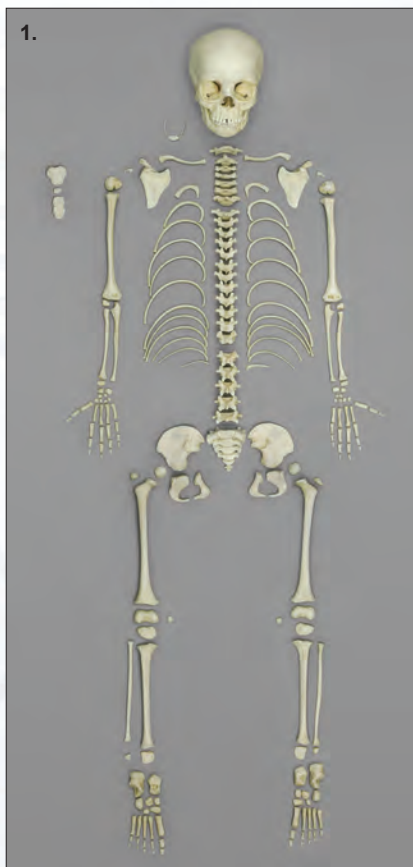
5-year-old Child Skeletons, Comparative Modern and Archaic
(Stands included)
COMP-183.....\$3,600.00

5-year-old Child Skeleton, Modern, Articulated
37" tall (Stand included)
SC-183-A.....\$1,950.00

5-year-old Child Skeleton, Archaic, Articulated
32 1/2" tall (Stand included)
SC-116-A.....\$2,190.00

5-year-old Child Skeleton, Archaic, Disarticulated
(Not Shown)
SC-116-D.....\$1,150.00





Human Archaic and Modern Child Comparative Set

Pelvis, femur and humerus from archaic 5-year-old (Moroccan) and modern 5-year-old child.

COMP-106\$425.00

1. 5-year-old Child Skeleton, Disarticulated SC-183-D.....\$1,250.00

5-year-old Child Half Skeleton, Disarticulated (Not Shown) SC-183-DH.....\$789.00

2. 5-year-old Child Flexible Vertebral Column with Sacrum & Coccyx on Stand 15" H

KO-323\$620.00

5-year-old Child Flexible Vertebral Column with Pelvis on Stand (Not Shown) 16 1/2" H

KO-324.....\$690.00



An economical alternative to the 5-year-old Child Skeleton or Half Skeleton. An exceptionally detailed skull featuring a removable calvarium and spring hinged jaw is included. All paired bones are from the left side. The bones (some with epiphyses and diaphyses separated) may be used for understanding bone formation and growth, noting differences in the child and adult skeletons, and recognizing juvenile bones for forensic purposes. With the diminished availability of natural bone skeletons, Bone Clones® products are increasingly used in advanced anatomical and osteological instruction. Plastic carrying case S-81 included.

Child Bone Box (Case S-81 Included) COMP-110-C.....\$728.00



Case, Premium S-91.....\$95.00



www.boneclones.com

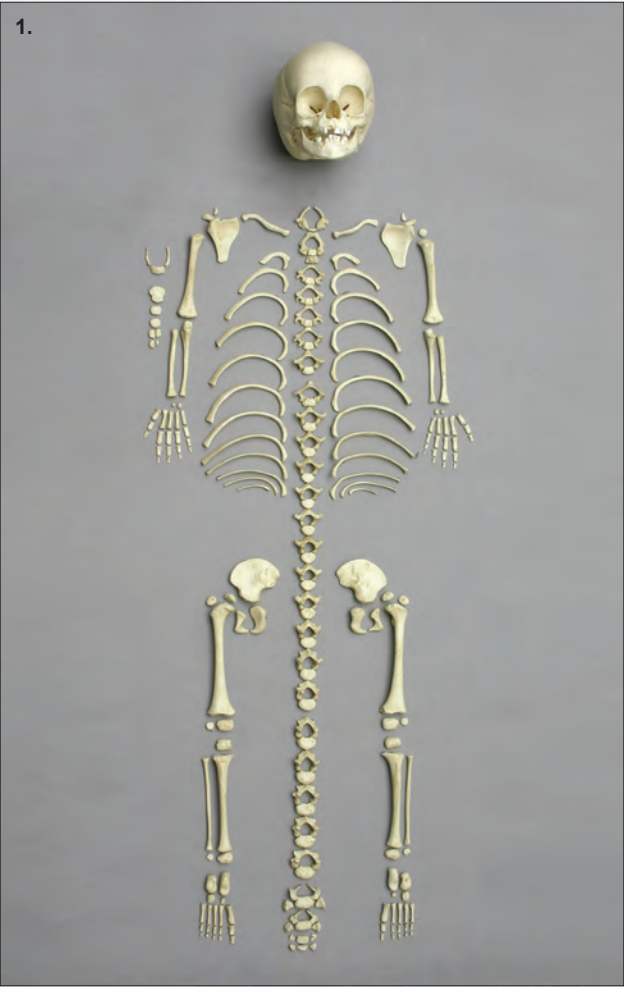


Bone Clones Osteological Reproductions

CHILD POSTCRANIAL

27

Bone Clones produces a series of Child Skulls and Skeletons that provides excellent examples of ages ranging from the age of 4 months through adolescence. We produce specimens with visible underlying dentition, appropriate for all students learning about tooth development and eruption patterns, as well as with the calvarium cut, enabling the study of the endocranium. In addition to the skulls, we offer the skeleton of a 14 to 16-month-old, a 5-year-old (both modern and archaic), and an adolescent.



**1. 14 to 16-month-old
Child Skeleton,
Disarticulated
SC-187-D.....\$1,250.00**

**2. 14 to 16-month-old
Child Half Skeleton,
Disarticulated
SC-187-DH.....\$789.00**

**3. 14 to 16-month-old
Child Skeleton,
Articulated, Rigid
(Stand included)
25 1/2" tall.
SC-187-A.....\$1,950.00**





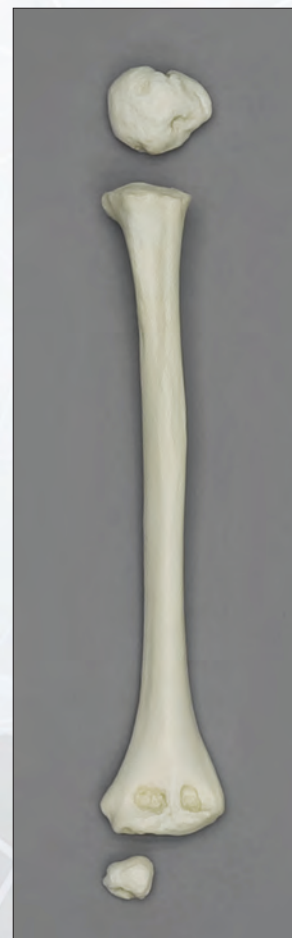
**5-year-old Child Femur,
Articulated**
9"
SC-183-F.....\$50.00



**5-year-old Child Femur,
Disarticulated
Epiphyses**
SC-183-FD.....\$70.00



**5-year-old Child Humerus,
Articulated**
8"
SC-183-61-H.....\$48.00



**5-year-old Child Humerus,
Disarticulated
Epiphyses**
SC-183-61-HD.....\$70.00

Postcranial Fetal Bones

KO-340-CSET Set of 53 Postcranial Fetal bones (All 8 sets) \$608.00

Cast from real bones, these 53 postcranial skeletal elements are excellent representations of human osteology during fetal development. For more information, please see our website.

Fetal, 4 months Set of 3
KO-328-SET.....\$35.00

Fetal, 7 months Set of 7
KO-374-SET.....\$95.00

Fetal, 4 1/2 months Set of 3
KO-325-SET.....\$35.00

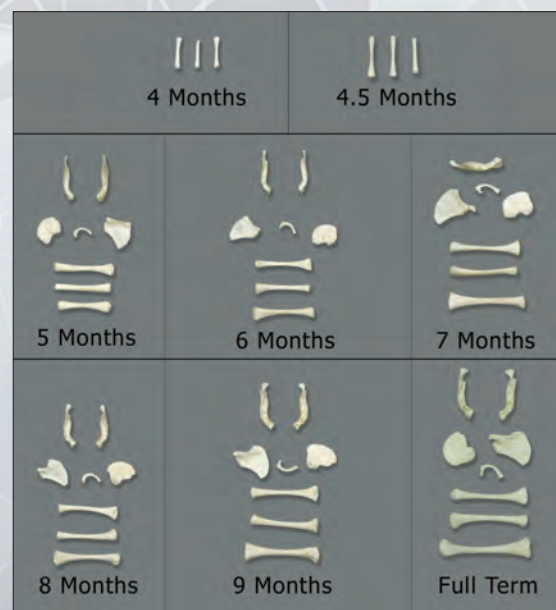
Fetal, 8 months Set of 8
KO-366-SET.....\$95.00

Fetal, 5 months Set of 8
KO-389-SET.....\$95.00

Fetal, 9 months Set of 8
KO-358-SET.....\$95.00

Fetal, 6 months Set of 8
KO-381-SET.....\$95.00

Fetal, Full Term Set of 8
KO-350-SET.....\$95.00



www.boneclones.com



Bone Clones Osteological Reproductions

**CHILD AND FETAL
POSTCRANIAL**

29



**Fetal Skull, 40 weeks,
Calvarium Cut**
4 3/4" L, 3 1/2" W, 3 1/4" H
BC-281\$195.00



Stand for S-BC-194-Set.....\$65.00



BC-194 20 weeks BC-195 29 weeks BC-180 31 weeks BC-181 32 weeks BC-182 40 weeks

**Human Fetal Skull Set of 5
BC-194-Set ...\$375.00**

**All Skulls Available
Individually, \$80.00 Each**

We offer what is, perhaps, the only fetal skull with the calvarium cut. The detail present in this skull, including the ossicles, all calvarial sutures, and fontanelles, will guarantee its value as a teaching tool both for the educator and practitioner. By removing the calvarium, students are able to learn the complex anatomy of the endocranium, especially including the pathways of the foramina of the skull base and the orbit.

**Human Fetal Skull Set of 3
BC-182-Set\$225.00**



BC-180 31 weeks BC-181 32 weeks BC-182 40 weeks

Bone Clones offers the world's only fetal osteology reference set to span the intrauterine growth period from 13 weeks to full term. This set of fetal elements of known age permits detailed study of human skeletal morphology at all stages of development. The skulls and postcranial sets of bones can easily be utilized as reference material by laboratories that study subadult remains; alternatively, they can be evaluated by students as part of their hands-on training in human fetal osteology.



Stand for S-BC-228-Set.....\$85.00



**Human Fetal Skull Set of 12
BC-228-Set\$900.00**

This resource (designed to flex at the joints and neck) will enable educators to physically demonstrate the impact gravity has on the underdeveloped/immature human skeleton. Educators can show positional deformation, thereby illustrating the impact of poor supportive positioning and the potential for associated lifelong morbidity. This model's anatomic accuracy provides the visual and functional evidence necessary to positively impact clinical practice in the neonatal intensive care unit.

Human Fetal Skeleton, 32 weeks, Flexible

(Stand Included)

16" tall

SC-226-A.....\$1,195.00



**Human Fetal Full Term Cranial Set:
Sphenoid, Ethmoid & Temporal
Bones in Plastic Case
KO-186-020-SET..... \$345.00**



**1. Fetal Skeleton,
Articulated, Rigid**

An excellently detailed 32-week-old human fetal skeleton.

(Stand Included)

15 1/2" tall.

SC-181-A.....\$649.00

**2. Fetal Skeleton, Full
Term, Articulated**

This excellent skeleton of a full term fetus is remarkable for its completeness. The skull is available with or without the calvarium cut. We thank the Maxwell Museum of Anthropology for the opportunity to cast this skeleton.

(Stand Included)

16 1/2" tall.

SCM-186-A.....\$1,950.00

**3. Fetal Skeleton,
Full Term,
Disarticulated**

SCM-186-D.....\$949.00



www.boneclones.com



Bone Clones Osteological Reproductions

FETAL SKELETONS

31

MUSEUM OF MAN • PATHOLOGY



Leishmaniasis Cranium

Transmitted by sandflies infected with a protozoa, this disease results in destructive lesions of the face and nose.
BCH-807.....\$309.00



Syphilis Cranium

Affected by syphilis, a bacterial infectious disease, this cranium shows lytic lesions and porotic hyperostosis.
BCH-808.....\$309.00



Meningioma Cranium

Cranium showing massive development of spongy bone involving nearly all of the frontal squama and extending onto the parietals.
BCH-809.....\$309.00



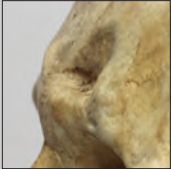
Artificial Cranial Deformation Cranium

Cranium showing pronounced fronto-occipital flattening with well-developed external occipital protuberance.
BCH-810.....\$309.00



We are grateful to the San Diego Museum of Man for allowing us to select specimens for reproduction and granting us exclusive casting rights to these pieces from their valuable Hrdlička Paleopathology and Stanford-Meyer Osteopathology Collections. A portion of the sales goes to further their work.

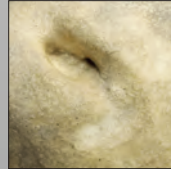
The Hrdlička Paleopathology Collection: This collection consists of approximately 1000 human bone specimens showing disease, trauma, and cranial surgery. The collection was assembled by Aleš Hrdlička of the Smithsonian Institution for the 1915 Panama-California Exposition. Most of the specimens were collected in Peru in 1913.



Healed Frontal Bone Fracture Cranium

Healed blunt force fracture involving left browridge and linear depression above glabella.

BCH-811.....\$309.00



Healed Parietal Bone Fracture Cranium

Area around fracture is raised due to new bone growth. Also exhibits frontal bone fracture and temporomandibular osteoarthritis.

BCH-812.....\$309.00



Button Osteoma Cranium

Benign tumor on frontal bone in midline above the glabella. Also, nearly edentulous cranium and temporomandibular osteoarthritis on right side.

BCH-814.....\$309.00



Porotic Hyperostosis Cranium

Pathological condition resulting in porous areas on both parietals and occipital bone.

BCH-815.....\$309.00

MUSEUM OF MAN • PATHOLOGY & TRAUMA



Partial Cranium with Cribra Orbitalia

Pathological condition manifesting as porous areas on the roofs of the orbitals.

BCH-813.....\$279.00



Left Tibia with Squatting Facet

A smooth, flat depression on the distal end of the tibia caused by long periods of squatting.

KOH-448.....\$90.00



Left Humerus with Amputation

Amputated at the midshaft and showing complete healing.

KOH-449.....\$75.00



Mandible with Dental Abscessing

This mandible displays abscesses (holes) caused by a dental infection.

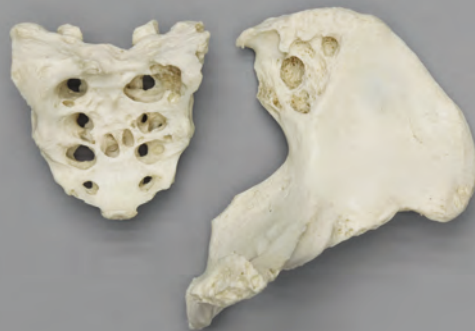
KOH-450.....\$90.00

MUSEUM OF MAN • PATHOLOGY & TRAUMA



Ankylosing Spondylitis (Candle wax)

Displaying compression fracture of T9 and fusion of all 8 verts, caused by progressive inflammatory disease.
KOH-441.....\$260.00



Tuberculosis, Innominate and Sacrum

Displaying numerous circular lytic lesions with little new bone development involving the sacro-iliac region.
KOH-442.....\$265.00



Auditory Exostosis, Temporal Bone

Also known as surfer's ear, this benign lesion may be a response to cold water immersion.
KOH-445.....\$170.00



Left Humerus with Healed Distal Fracture

Exhibits angulation and override (fractured bone parts overlap each other). Osteoarthritis also present on distal joint surfaces.
KOH-447.....\$90.00



Left Femur with Healed Comminuted Fracture

Exhibits considerable displacement and irregular union, resulting in numerous large openings communicating with the central bone cavity (where bone marrow is stored).
KOH-446.....\$129.00



www.boneclones.com



Bone Clones Osteological Reproductions

PATHOLOGY AND TRAUMA

35

MUSEUM OF MAN • PATHOLOGY & TRAUMA



Sacrum with Spina Bifida Occulta

Sacrum illustrating anomaly, which occurs on the backside of the sacrum when there is incomplete development of the elements of the neural arch (in this case, incomplete fusion).
KO-268.....\$129.00



Left Scapula with Healed Fracture

Some lateral displacement and overriding is present. Joint surface has expanded due to lipping and eburnation (polishing).
KO-269.....\$90.00



Left Clavicle with Healed Double Fracture

Healing with considerable angulation, resulting in distorted, shortened bone. Attachment areas for the deltoid and trapezius muscles were disrupted with resultant ossification into muscles.
KO-270.....\$85.00



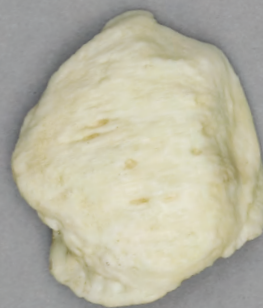
Left Ulna with Healed Parry Fracture

Slight angulation of the distal end and a large callus.
KO-271.....\$85.00



Partial Left Femur with Healed Hip Fracture

Showing displacement and profuse callus development resulting in considerable deformity. The cut below midshaft occurred postmortem.
KO-272.....\$129.00



Right Patella with Osteoarthritis

Displays polishing and lipping, both caused by bone rubbing against bone.
KO-273.....\$28.00

Stanford-Meyer Osteopathology Collection: This collection was a gift from Stanford University in 1981. It consists of approximately 3500 human bone specimens from 1500 dissecting room cadavers. It was used from the early 1900s to 1960 by the Anatomy Department of Stanford University to train medical students in bone diseases and disorders.



Left Tibia with Healed Fracture

Healed with some override, but no angulation. Both the proximal and distal articular surfaces are rimmed with osteophytes and the distal surface is roughened.

KO-274.....\$90.00



Left Tibia and Fibula, Amputation

The ends of the bones have healed over, which indicates that the amputation occurred during life as opposed to the bone being cut after death.

KO-275.....\$129.00



Left Tibia and Fibula, Amputation with Fusion

Callus development at the ends has resulted in fusion of the two bones.

KO-276.....\$129.00



Left Fibula with Healed Fractures

Two well-healed fractures with some displacement and angulation.

KO-277.....\$90.00



Rickets, Femur, Tibia, Fibula

Inadequate mineralization of bone (vitamin D deficiency) resulted in the bowing and deformity of these leg bones.

KO-443.....\$220.00



Osteosarcoma, Left Femur

Malignant tumor enveloped the upper half of the bone in a billowy mass of spongy bone.

KO-444.....\$150.00

Specimens from UC Davis will be sold only to
recognized educational
institutions and professionals associ-
ated with educational institutions.
Visit www.boneclones.com for additional pictures.



**Human Male Skull,
22 Caliber Bullet Wound with Calvarium Cut**
7 1/2" L, 6" W, 8" H
BC-323\$325.00

This skull provides the rare opportunity to see the effects of a bullet's trajectory on both the inner and outer table of the skull. It exhibits a class entry wound (circumscribed semicircular opening) at the right parietal just superior to the temporal bone, and a larger, more irregular exit wound with characteristic beveling of the outer table of bone on the left parietal. Removal of the skullcap reveals the beveling on the inner table at the entry wound as well as the circumscribed nature of the exit wound. Bone Clones has also accurately reproduced the radiating fracture lines caused by the projectile's impact and all the other details of the skull (i.e., sex is male). With gratitude to the UC Davis Body Donation Program for the opportunity to cast this specimen.

Achondroplasia is a genetic condition that results in abnormal body proportions. In normal development, cartilage converts to bone in most places. In individuals with achondroplasia, that conversion process malfunctions, especially in the long bones of the arms and legs, resulting in disproportionately short limbs. This skeleton is known to be from a female around 60 years of age. The short, malformed limbs, spinal scoliosis, and fragile, edentulous jaw, among other features, provide a moving record of a difficult life. Bone Clones wishes to thank the UC Davis Body Donation Program for allowing us to replicate and therefore document this extraordinary osteological condition.



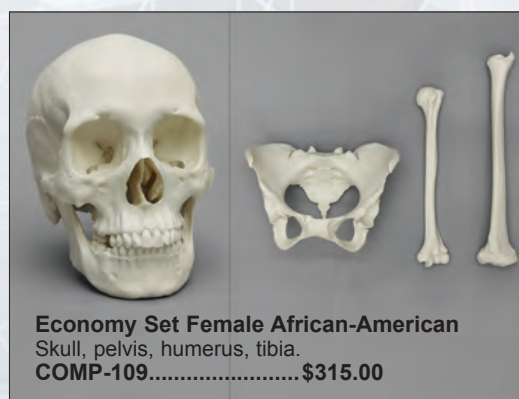
Human Female Achondroplasia Dwarf, Articulated
40 1/4" tall. (Stand included)
SC-279-A.....\$6,800.00

Human Female Achondroplasia Dwarf, Disarticulated
SC-279-D\$5,800.00

Human Female Achondroplasia Dwarf Skull
9" L, 6 1/4" W, 7" H
BC-279\$380.00

Forensics Osteology plays a significant role in identifying remains encountered at crime scenes and war-devastated regions. Forensic anthropologists are able to interpret information found on bones to infer cause of death, estimate age, and suggest sex and ancestry. Evidence of trauma and/or illness provides valuable clues. Bone Clones has been able to use its expertise in reproducing the finest details of skeletonized material to create Forensicclones®, a collection of skulls and skeletons that are specifically suited for this area of study. These replicas, cast from original natural bone skulls and skeletons, can help in understanding events that transpired with no reliable witnesses to shed light on them.

Comparative Economy Sets



Female African-American Postcranial



Tibia
14 1/2"
KO-178-T...\$42.00

Fibula
14 3/4"
KO-178-FA...\$46.00

Radius
9 1/4"
KO-178-R...\$42.00

Ulna
9 3/4"
KO-178-U...\$42.00

Humerus
12 1/2"
KO-178-H...\$58.00



www.boneclones.com



Bone Clones Osteological Reproductions

FORENSIC SETS

39



**Forensic Black Bear
Paw, Right Front**
Ursus americanus
Ideal in forensics courses for comparison to the human hand.
7"
FO-075\$95.00



Comparative Human Maxilla, Set of 3
Homo sapiens
African, Asian and European.
COMP-105.....\$155.00



Spanish Conquistador Skull (1530 AD)
Spanish soldier's skull from the 16th century, as found in Chama, New Mexico, with a "broad ax" deeply planted in the cranium.
11" L, 5 3/4" W, 7 1/2" H
BC-199\$375.00



Healed Blunt Force Trauma Skull
Homo sapiens
Comminuted fracture of the left cheek healed without effective medical treatment.
7 3/4" L, 5 3/4" W, 6" H
BC-303\$295.00



Human Bullet Rib
Right rib with embedded bullet from a .32 caliber gun. New bone growth around the injury site shows that the wound was nonfatal. 8"
FO-101\$40.00



Machete-wound Skull
Machete strikes caused all of the skull fractures.
9" L, 5 1/2" W, 5 1/2" H
BC-185\$375.00



Forensics Primary Set
A comparison set designed to teach basic Forensic Anthropology. Contains:
• Female European Skull (BC-133) • Human Bullet Rib (FO-101)
• Male African Skull (BC-110) • Economy Male Asian Set (COMP-101)
• Gunshot-wound Skull (BC-152) • Economy Female Asian Set (COMP-102)
COMP-104.....\$1,316.50



Roman Gladiator Skull
(72 AD to 472 AD)
8" L, 6" W, 7" H
BC-198\$375.00



Masculinized Skull
European female. 68-year-old
7 1/2" L, 5" W, 6 1/2" H
BC-197\$295.00



Gunshot-wound Skull
European male
7 1/2" L, 5 1/4" W, 6 1/4" H
BC-152\$298.00



Human Male Skull
European, Elderly
8 1/2" L, 5 1/2" W, 6 1/4" H
BC-204\$290.00



Shotgun-wound Skull
The skull is that of a woman in her early 20's. The cranium was penetrated by two rounds from a .410 shotgun fired at close-range.
8 1/2" L, 5" W, 6" H
BC-196\$298.00



Human Male Cranium, Hammer Blows
Smooth, rounded edges of depressed wounds are indicative of healing, suggesting a substantial period of survival.
8 1/2" L, 5" W, 6" H
BC-217\$295.00



Cradle Board Cranium, Possibly Microcephalic
Adult female skull with artificial cranial deformation ("cradleboarding"), asymmetry, and unusually small cranial capacity (760 cm³). Prehistoric, from Peru.
6 1/4" L, 5 1/2" W, 5" H
BC-222\$295.00



Small-Caliber-wound Skull
Human female skull with three small gunshot wounds making entry through occipital. Damage to right temporal bone may represent damage resulting from bullets exiting the skull.
9" L, 5" W, 6" H
BC-202\$295.00



Scaphocephalic Skull
The skull is abnormally long and narrow as a result of premature closure of the sagittal suture, with heavy centers of ossification in the line of the suture.
8" L, 4 1/2" W, 8" H
BC-193\$309.00



The Maxwell Collection

The Maxwell Museum of Anthropology's Laboratory of Human Osteology, at the University of New Mexico, specializes in numerous facets of physical anthropology. The laboratory serves as a repository of human remains and includes prehistoric, historic, documented, and forensic remains.

Established in 1984 by Dr. J. Stanley Rhine, the Maxwell Museum's Documented Skeletal Collection has grown to include 237 individuals encompassing both sexes, all ages, and many population groups. The skeletal remains are obtained by donation, either by the individual before death, or by the family of a deceased loved one. Information on the sex, age, population affinity, and cause of death is available for the majority of these individuals, allowing students and visiting researchers to develop and test new techniques and theories.

Since 1995, prospective donors or their families have been asked to provide health and occupational data as well. With this information, researchers are able to examine the skeletal manifestations of particular diseases including degenerative joint and disc diseases, lymphoma, and osteoporosis, as well as the reaction of bone to repetitive motions and trauma. Recent research has included efforts towards the identification of handedness in individuals, determination of body mass from the skeleton, and variation in cranial damage from various projectiles. The importance of the Documented Collection cannot be overstated. No other institution in the American West has as large a collection of human skeletal remains with such extensive demographic data.

Bone Clones is grateful to the Maxwell Museum for allowing us to select specimens for reproduction from their valuable collection and granting us exclusive casting rights to these pieces. A portion of the sales goes to further their work.

Please note that specimens from the Maxwell Collection can only be sold to recognized educational institutions and professionals associated with educational institutions.

Human Female, Blunt Force Trauma

American Indian female who died when hit by an 18-wheel truck.



Blunt Force Trauma Skull

This skull shows perimortem fractures and hyperostosis.
BCM-803\$279.00



Innominate and Femur Set

The innominate, one of the strongest bones in the body, has clean breaks. Also, the fracture of the femur includes a fragment broken from the posterior shaft, a clear indication that the fracturing force came from the front.

Set Includes FM-540 and FM-541.
FM-540-SET\$160.00

Innominate (L)

7 ¾" x 5 ¾"
FM-540...\$49.00

Femur (R)

Three segments.
FM-541...\$111.00



Male Skull for Facial Reconstruction

Comes with 8 photographs of individual during lifetime, allowing for comparison to facial approximation based on the skull.
9" L, 5 ½" W, 7 ½" H

BCM-804\$450.00



Gunshot Trauma Cranium

Classic enter and exit. No maxilla or mandible.
7 ½" L, 5 ¼" W, 5 ¾" H

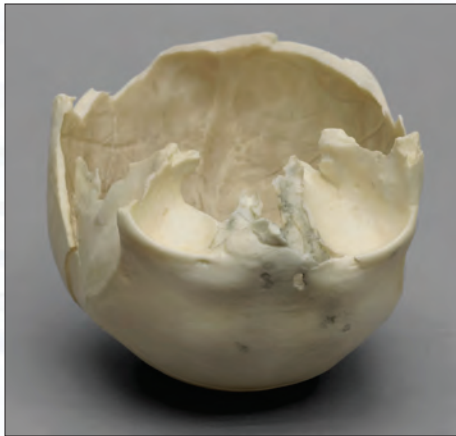
BCM-806.....\$290.00



Blunt Force Trauma Cranium, Eye Orbit, No Mandible

7 ½" L, 5 ¼ W, 5 ¾" H

BCM-805.....\$290.00



Partial Skull with Shotgun Pellets Embedded

Skull of a 39-year-old European American female shows damage from a shotgun wound, with pellets embedded in the bone.
7" L, 5" W, 4" H

BCM-802.....\$259.00

Calvarium with Hyperostosis Frontalis Interna

6 3/4" L, 5 3/4" W, 3 1/4" H

FM-601.....\$63.00

Stands are available for select products. Please visit www.boneclones.com for more details.



Skull Fracture Set of Six Fragments

This set of skull fragments, from six individuals and from different areas of the skull, illustrates different types of blunt force traumatic injuries, wounds received from assorted weapons (hammers, guns), and variable stages of healing (from none at all to well-healed fractures).

KOM-804-SET...\$189.00



Detailed information on each fragment is available on our website.



www.boneclones.com



Bone Clones Osteological Reproductions

THE MAXWELL COLLECTION
PATHOLOGY AND TRAUMA

43

**Human Male,
65-year-old, Heart Disease**

From a 65-year-old European American male who died of heart disease (as a complication of alcoholism). There is fusion of the 5th lumbar vertebra and the sacrum, a relatively common condition.

Set Includes FM-528 through FM-530.

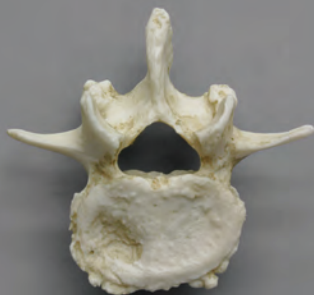
FM-528-SET.....\$210.00



**Manubrium with Fused
Ossified Cartilage**
2" x 3 3/4"
FM-528\$62.00



Sacrum and L-5 Fused
5 1/2" L, 4 1/4" W, 3" H
FM-529\$120.00



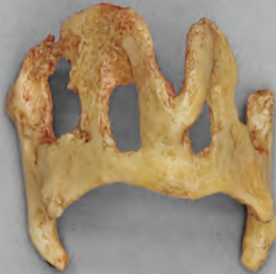
L-4 Vertebra
1 3/4" x 1 1/4"
FM-530\$39.00

**Human Male,
68-year-old Hyperostosis**

These remains come from a 68-year-old European American male who died of heart disease. The fused vertebrae and ribs provide an excellent example of diffuse idiopathic skeletal hyperostosis (DISH).

Set Includes FM-531 through FM-533.

FM-531-SET.....\$165.00



Thyroid Ossified
1 3/4" x 2"
FM-531.....\$45.00



C-4 through T-3 and 2 Ribs Fused
6" L, 6 1/4" W, 5 1/4" H
FM-532.....\$89.00



Hyoid Ossified
1 1/2" W
FM-533\$39.00

**Human Female, Cervical Ribs
with Vertebra and 2 Humeri**



Cervical Ribs with Vertebra and 2 Humeri

Both humeri show evidence of head degeneration. Bilateral supernumerary (extra) cervical ribs are attached to the seventh cervical vertebra (above the normal first ribs). We have attached one cervical rib, but the other remains unattached. These associated cervical ribs, the C7 vertebra, and both humeri are examples of congenital abnormalities. Many of these defects can be compatible with life and maturity. In other words, they are not lethal, as evidenced here, as this set of pathological specimens is known to be from an older female.

KOM-801-SET...\$169.00

Human 13-year-old Partial Skeleton

Growth development study and research set. These bones are from a 13-year-old, 5' 3" and 120 lbs., European American male. All epiphyses are included. Individual parts available separately. Includes FM-509 through FM-527.

FM-509-SET \$1,169.00



See our website
for postcranial
list and more
information.



Human Male European, 62-year-old

This individual's death was due to alcoholism. There are poorly aligned healed fractures of the right and left tibiae and fibulae and left femur. The left femur head is separate from the shaft at the neck, and a pseudoarthrosis (false joint) has formed at the site.

FM-501-SET.....\$615.00



See our website for
postcranial list and
more information.



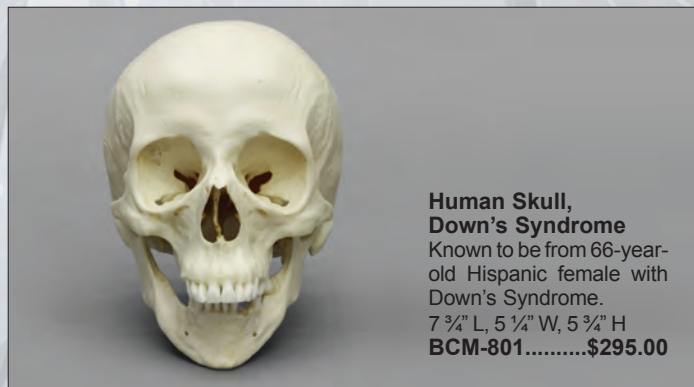
Human Female, 39-year-old

European American female, who died due to a shotgun wound to the head. The pelvis is a typical one for a European American woman of this age. She had at least one child and may have been pregnant at the time of her death.

FM-534-SET . \$320.00



See our website for
postcranial list and
more information.



Human Skull, Down's Syndrome

Known to be from 66-year-old Hispanic female with Down's Syndrome.

7 3/4" L, 5 1/4" W, 5 3/4" H

BCM-801.....\$295.00



www.boneclones.com



Bone Clones Osteological Reproductions

THE MAXWELL COLLECTION
PATHOLOGY AND TRAUMA

45

Trephined & Elongated Skulls



Human Female, Trephined Cranium
7 1/2" L, 5" W, 5 3/4" H
BC-115\$225.00



Human Female, Elongated Skull with Jaw
9 3/4" L, 4 3/4" W, 9 1/4" H
BC-200\$249.00



Human Male, Elongated Trephined Skull with Jaw
9 1/2" L, 4 3/4" W, 9 3/4" H
BC-201\$249.00



Human Sternum, Pathology
7 1/2" x 3"
FO-114.....\$65.00

Stands Sold Separately. \$35.00 Each. Please visit www.boneclones.com for more details.



Human Child Vertebral Column and Sacrum, Scoliosis
An excellent example of extreme childhood scoliosis. Vertebral column has ribs attached. The sacrum is included and detached.
12 1/2"
FO-113.....\$479.00

Surgically-altered Human Radius, Ulna, Innominate

The badly fractured radius and ulna had been repaired with bone grafts from the anterior iliac crest -- an important finding for forensic pathologists and anthropologists.

FO-102.....\$280.00



Human Femoric Hip Fracture, Sectioned

In this example of an impacted hip fracture, the anatomical neck of the femur is wedged into the cancellous bone of the proximal femur.

6 1/2"
FO-109.....\$89.00



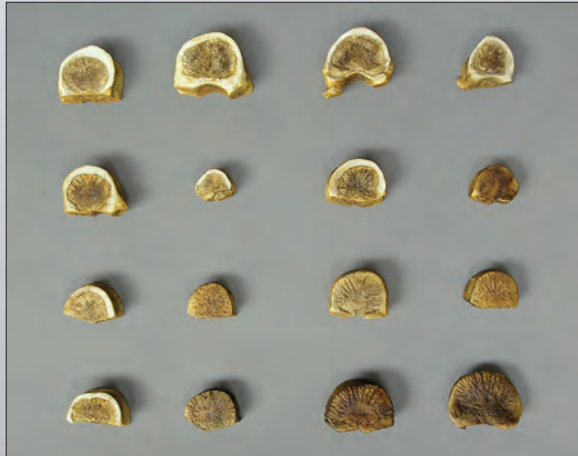
Human Femur, from Amputee

The distal end of the femur is remodeled in response to change in function after amputation. Compression necrosis is apparent at the distal point of contact.

9 3/4"
FO-108.....\$89.00

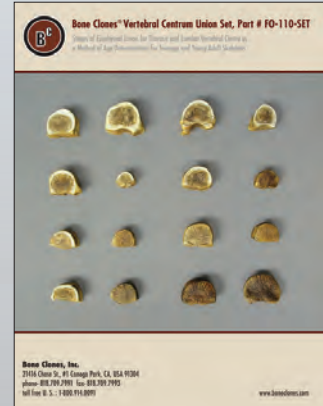


Human Vertebral Lumbar Union Aging Series



Set of 16 vertebral centra unions for determining age of teenage and young adult skeletons by observations of epiphyseal union of the thoracic and first two lumbar vertebral centra. Set includes the 16 selected centra and a 22-page booklet of guidelines for research and teaching. Included in the booklet is the 11-page original paper by Albert and Maples (1995), published in the *Journal of Forensic Sciences*.

FO-110-SET.....\$319.00



Booklet

Comparative Lumbar Vertebra Set of 10 (Arthritic and Normal)

Homo sapiens

The normal vertebrae are typical of a young adult who has experienced no unusual back trauma. The edges of the vertebral bodies are smooth and regular in shape. The osteoarthritic vertebrae are typical of an older adult or a person with a history of heavy labor (or both). The edges of the vertebral bodies are sharp and irregular. Bony outgrowths (osteophytes) are present.

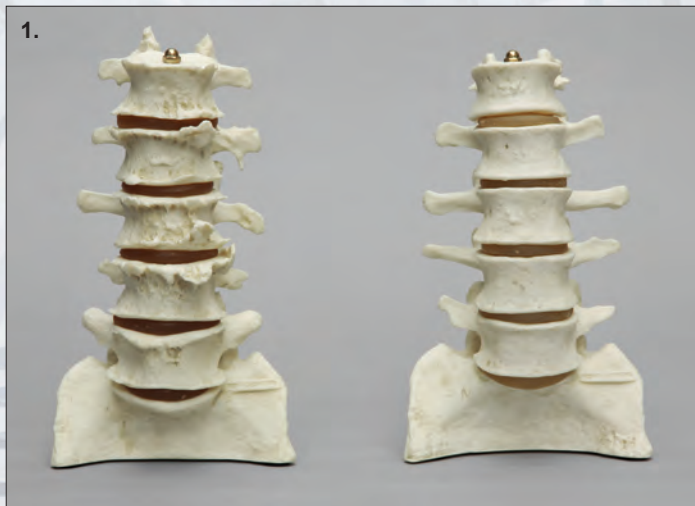
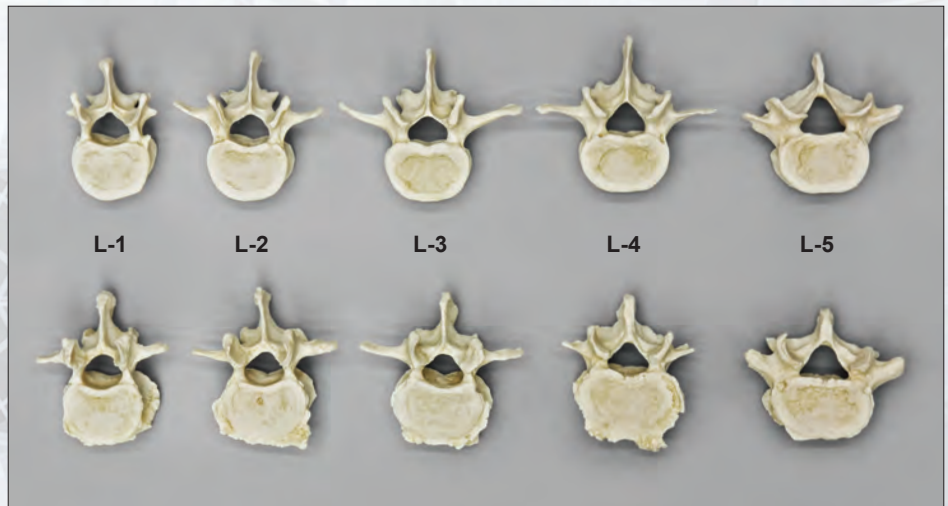
FO-105-SET\$360.00

Comparative Lumbar (L-3) Vertebra Set of 2 (Arthritic and Normal)

Homo sapiens

One normal and one arthritic vertebra.

FO-105-P....\$72.00



Each Display Set is mounted on a modified sacrum with a rod down the center, allowing the vertebrae and intervertebral discs to be removed and replaced easily.

1. Comparative Lumbar Vertebra Display Set of 10 (Arthritic and Normal)
FO-105-AY.....\$420.00

2. Lumbar Vertebra Display Set of 5 (Normal)
FO-105-N.....\$210.00



www.boneclones.com



Bone Clones Osteological Reproductions

**PATHOLOGY
AND FORENSICS**

47

1.



1. Oase 1 mandible and Oase 2 cranium with sagittal cut
 8 3/4" L, 5 1/4" W, 7 1/2" H
BH-048\$359.00

Stand for BH-048
S-BH-048.....\$35.00

2. Oase 1 mandible and Oase 2 cranium assembled and reconstructed
 8 3/4" L, 5 1/4" W, 7 1/2" H
BH-049 \$359.00

Stand for BH-049
S-BH-049..... \$35.00

Anatomically Modern Humans

Homo sapiens

Oase 1 mandible and Oase 2 cranium

35,000 years BP: Oase 1 and Oase 2 were both discovered in the Peștera cu Oase, Romania, from 2002-2005. The Bone Clones® mandible was cast from the original bone. BH-048, which has a sagittal cut revealing details of the endocranium, is an exact cast of a 3D scan printed output provided to Bone Clones by Racoviță Institute of Speleology. From there Bone Clones removed the scan lines and reconstructed the missing details and elements in consultation with Erik Trinkaus and Hélène Rougier and produced BH-049. These are the earliest modern human remains found to date in Europe. They provide a mosaic of derived modern human and archaic features. With gratitude to the Emil Racoviță Institute of Speleology.

2.



3.



3. *Homo sapiens* Cro-Magnon
 30,000-32,000 YA.
 Les-Eyzies, France.
 8 3/8" L, 6" W, 6 1/8" H
BH-017\$195.00

Cro-Magnon with Jaw
 (Not shown)
 8 3/8" L, 6" W, 7 3/4" H
BH-017-C\$280.00

4.



4. *Homo sapiens* Skhul 5 Male
 100,000 YA.
 Mount Carmel, Israel.
 8 1/2" L, 5 5/8" W, 6 7/8" H
BH-032\$295.00

Homo sapiens idaltu Herto

154,000-160,000 YA.
 BOU-VP-16/1
 Discovered in Herto, Middle Awash, Ethiopia, in 1997. Adult cranium with a cranial capacity of 1450 cc. White et al. describe the morphology as intermediate between earlier archaic African forms and later Modern Humans, thus the sub-species idaltu ("elder").
 9" L, 6 1/4" W, 7" H
BH-045....\$349.00



Fossil Hominid Introduction

Interest in the evolution of man continues unabated. Each new discovery feeds into the stream of information about our ancient human history.

The Bone Clones® Fossil Hominid line is composed of finds from Anatomically Modern Humans, Archaic Humans, Early Homo, Early Hominins, and Other Hominids. These classifications of human ancestors are provided for general categorization of casts available, and we hope it will help to place them in a timeline of human development.

The majority of the casts in this series have been recreated by our team of anatomical sculptors, while others have been produced from original material or scans of original material provided by researchers and/or the country of origin.

We continue our effort to produce new finds as they occur, leaving time for original papers to be published and enough scientific data to be obtained so we may produce our casts as precisely as possible. Each Hominid is carefully researched and produced based on some or all of the following: casts of original fossils, the latest literature (descriptions and/or published measurements), input from the scientific community, and full color, life-size photographs, or any combination thereof.

The recreated hominids offered in this series are high quality, artistic recreations that can be advantageously used by educators as important visual aids in the classroom and appreciated by the general public. They are not intended for advanced graduate work or to be measured for research purposes. Special thanks to our paleoanthropologist and archaeologist consultants.

Stands Available \$35.00 each



Homo sapiens
Kennewick Man

9,000-9,500 years old. The cranium of Kennewick Man was discovered in the Columbia River in Kennewick, Washington, in July, 1996 by Thomas and Deacy. With the assistance of Dr. James Chatters, a local paleontologist and archaeologist who was serving as forensic anthropologist at the time, much of the skeleton was found. The skull exhibits characteristics that call into question previous ideas about the peopling of the Americas. He is estimated to have been between 5' 7" and 5' 9", 160 pounds and approximately 40 years old at the time of his death. This skull has produced a great deal of controversy over the years for a variety of reasons. The Bone Clones® cast is a reconstruction by Dr. James Chatters and Bone Clones, Inc., who jointly own the copyright to the product.

8 ½" L, 5 ½" W, 7 ¼" H
BH-047.....\$389.00

Other Fossil Primates



Saadanius hijazensis
SGS-UM 2009-002

28-29 MYA. Discovered by paleontologist lyad Zalmout in 2009 in the Al Hijaz province in Saudi Arabia. It was placed within the Catarrhini, the common ancestor of Old World monkeys and hominoids.

4 ½" L, 2 ½" W, 3 ¼" H
BH-043.....\$149.00



Proconsul africanus
14-23 MYA.

Rusinga Island, Kenya.
5 ¼" L, 3" W, 3 ⅞" H
BH-023\$149.00



Sivapithecus indicus
GSP 15000 8.5-12.5 MYA.

Potwar Plateau, Pakistan.
5 ½" L, 4 ⅝" W, 6" H
BH-024\$210.00



Aegyptopithecus zeuxis
29 MYA.

Faiyum, Egypt
4" L, 2 ⅝" W, 2 ½" H
BH-025\$149.00



www.boneclones.com



Bone Clones Osteological Reproductions

FOSSIL HOMINID SKULLS

49

Archaic Humans

Stands Available
\$35.00 each

Homo neanderthalensis
Gibraltar 1
28,000-200,000 YA.
Discovered at Forbes' Quarry in Gibraltar in 1848, the exact location and details of discovery for this female cranium are unknown.
8 1/2" L, 6" W, 7" H
BH-040.....\$295.00

1. *Homo heidelbergensis*
Broken Hill 1
125,000-400,000 YA.
Kabwe, Zambia
8 3/4" L, 5 3/4" W, 6 1/4" H
BH-004.....\$195.00

2. *Homo neanderthalensis*
La Chapelle-aux-Saints
50,000 YA.
La Chapelle-aux-Saints, France.
9 1/4" L, 5 3/4" W, 6 3/4" H
BH-009.....\$280.00

3. Piltown Man
1912 Fraud.
Unearthed at Piltown near Sussex, England.
9" L, 6 1/8" W, 6 1/2" H
BH-014.....\$255.00

4. *Homo neanderthalensis*
La Ferrassie 1
50,000 YA. La Ferrassie, France.
9 3/8" L, 6" W, 6 7/8" H
BH-019.....\$280.00

5. *Homo heidelbergensis*
Atapuerca 5
350,000-500,000 YA.
Atapuerca, Spain.
8 3/8" L, 5 1/2" W, 6 1/4" H
BH-022.....\$305.00

6. *Homo neanderthalensis*
(Child) Teshik-Tash
70,000 YA.
Teshik-Tash, Uzbekistan.
8" L, 5 5/8" W, 6" H
BH-027.....\$280.00

7. *Homo neanderthalensis*
La Ferrassie 1
Sawyer/Maley Reconstruction
50,000 YA.
La Ferrassie, France.
8 3/4" L, 6" W, 7" H
BH-030.....\$478.00

8. *Homo floresiensis*
(Flores Skull LB1)
"The Hobbit"
18,000 YA. Flores, Indonesia.
5 7/8" L, 4 1/4" W, 5 1/2" H
BH-033.....\$305.00

Homo heidelbergensis
Bodo
600,000 YA. Discovered by Asfaw, Whitehead and Wood in 1976 in Bodo D'ar, in the Middle Awash Valley of Ethiopia. With a mosaic of features, its morphology is considered "intermediate," with greatest resemblance to the specimens from Kabwe and Petralona. Cranial capacity is 1250 cc.
8 1/4" L, 6 1/4" W, 6" H
BH-041.....\$245.00

Homo heidelbergensis
Bodo with Jaw
(not shown).
8 1/4" L, 6 1/4" W, 7 1/2" H
BH-041-C.....\$325.00



Early Homo

1. *Homo habilis*

KNM-ER 1813

1.9 MYA. Koobi Fora, Kenya.

6 $\frac{3}{4}$ " L, 4 $\frac{1}{4}$ " W, 5 $\frac{1}{4}$ " H

BH-002\$195.00

2. *Homo habilis* Jaw

OH 7

1.75 MYA.

Olduvai Gorge, Tanzania.

3 $\frac{1}{4}$ " L, 2 $\frac{1}{2}$ " W, 1 $\frac{1}{2}$ " H

KO-196\$149.00

3. *Homo habilis*

OH 24

1.8 MYA.

Olduvai Gorge, Tanzania.

7 $\frac{1}{2}$ " L, 4 $\frac{3}{4}$ " W, 4 $\frac{1}{4}$ " H

BH-010\$195.00

4. *Homo ergaster*

KNM-ER 3733

1.75 MYA. Koobi Fora, Kenya.

7 $\frac{1}{2}$ " L, 5" W, 5 $\frac{1}{4}$ " H

BH-011\$195.00

5. *Homo ergaster*

KNM-WT 15000

1.6 MYA. Nariokotome, Kenya.

8 $\frac{1}{4}$ " L, 5 $\frac{1}{4}$ " W, 6" H

BH-012\$280.00

6. *Homo rudolfensis*

KNM-ER 1470

1.8-1.9 MYA. Koobi Fora, Kenya.

8" L, 4 $\frac{3}{4}$ " W, 5 $\frac{3}{4}$ " H

BH-013\$195.00

7. *Homo erectus*

Sangiran 17

700,000-1.6 MYA.

Java, Indonesia.

8 $\frac{7}{8}$ " L, 5 $\frac{5}{8}$ " W, 5 $\frac{1}{2}$ " H

BH-018\$200.00

8. *Homo erectus (ergaster)*

Dmanisi

D2700 cranium,

D2735 jaw

1.75-2.0 MYA.

Dmanisi, Georgia.

7" L, 4 $\frac{3}{4}$ " W, 6 $\frac{5}{8}$ " H

BH-028\$305.00

9. *Homo antecessor*

800,000 YA.

Atapuerca, Spain

3 $\frac{1}{4}$ " L, 4 $\frac{3}{4}$ " W, 4" H

BH-031\$220.00

10. *Homo habilis*

KNM-ER 1813 with Jaw

1.9 MYA.

Koobi Fora, Kenya.

6 $\frac{3}{4}$ " L, 4 $\frac{1}{4}$ " W, 5 $\frac{1}{4}$ " H

BH-034\$385.00

11. *Homo erectus*

"Peking Man"

300,000-600,000 YA.

8 $\frac{1}{2}$ " L, 5 $\frac{3}{4}$ " W, 6 $\frac{3}{4}$ " H

BH-038\$349.00

1.



2.



3.



4.



5.



6.



7.



8.



9.



10.



11.



Early Hominins

1. *Australopithecus afarensis*
2.9-3.9 MYA. Ethiopia.
7 $\frac{3}{4}$ " L, 5 $\frac{1}{4}$ " W, 7" H
BH-001 \$235.00

**2. *Australopithecus*
(*Paranthropus*) *robustus***
SK 48 1.5-2 MYA.
Swartkrans, South Africa.
6 $\frac{3}{4}$ " L, 5 $\frac{3}{4}$ " W, 4 $\frac{3}{4}$ " H
BH-003 \$195.00

3. *A. (P.) robustus*
SK 48 with Jaw
6 $\frac{3}{4}$ " L, 5 $\frac{3}{4}$ " W, 7" H
BH-003-C \$280.00

**4. *Australopithecus*
(*Paranthropus*) *boisei***
KNM-ER 406
1.7 MYA. Koobi Fora, Kenya.
7 $\frac{3}{4}$ " L, 6 $\frac{3}{4}$ " W, 4 $\frac{3}{4}$ " H
BH-006 \$195.00

5. *Australopithecus africanus*
Sts 5 "Mrs. Ples"
2.5 MYA. Sterkfontein,
Transvaal, South Africa.
7 $\frac{1}{4}$ " L, 4 $\frac{3}{4}$ " W, 5 $\frac{1}{4}$ " H
BH-007 \$195.00

6. *Australopithecus africanus*
Sts 5 "Mrs. Ples" with Jaw
2.5 MYA. Sterkfontein,
Transvaal, South Africa.
7 $\frac{1}{4}$ " L, 4 $\frac{3}{4}$ " W, 7 $\frac{1}{2}$ " H
BH-007-C \$280.00

**7. *Australopithecus*
(*Paranthropus*) *aethiopicus***
KNM-WT 17000 "Black Skull"
2.5 MYA. Lake Turkana, Kenya.
8 $\frac{3}{4}$ " L, 5 $\frac{1}{4}$ " W, 4 $\frac{1}{4}$ " H
BH-008 \$195.00

**8. *Australopithecus*
(*Paranthropus*) *boisei***
OH 5 (*Zinjanthropus*)
1.8 MYA.
Olduvai Gorge, Tanzania.
8" L, 6 $\frac{3}{8}$ " W, 5 $\frac{3}{4}$ " H
BH-015 \$195.00

9. *A. (P.) boisei* OH 5 with jaw
8" L, 6 $\frac{3}{8}$ " W, 8 $\frac{1}{2}$ " H
BH-015-C \$280.00

10. *Australopithecus africanus*
(Taung Child)
2.3 MYA. Taung, South Africa.
5 $\frac{1}{8}$ " L, 3" W, 3 $\frac{3}{4}$ " H
BH-016 \$195.00

11. *Kenyanthropus platyops*
KNM-WT 40000
3.5 MYA. Lake Turkana, Kenya.
7" L, 4 $\frac{5}{8}$ " W, 5" H
BH-020 \$265.00

12. *A. (P.) robustus*
SK 54 (Juvenile)
Cranium Section 1.5 MYA.
Swartkrans, South Africa.
BHK-001 \$140.00





Australopithecus afarensis

Male A.L. 444-2

3 MYA.

Discovered in 1992 by Y. Rak in Hadar, Ethiopia, and analyzed with collaborators Kimbel and Johanson. In addition to being the largest *A. Afarensis* skull to date, it was the first discovery of an associated cranium and mandible for this taxon. This find confirms the essential features of the species as well as its extensive sexual dimorphism, and contributes to evidence of a 900,000 period of evolutionary stasis for *A. afarensis*.

9" L, 6 1/2" W, 8" H

BH-044.....\$349.00



Australopithecus (Paranthropus) robustus
DNH 7

~1.5-2 MYA.

DNH 7 was discovered by A. Keyser's team in 1994 at the Drimolen site in South Africa. One of the most complete early hominin skulls found from this time, the cranium and corresponding mandible are also the first from a single individual of this taxon. It has been suggested that DNH 7, a presumed female, provides evidence for *Au./P. robustus* being a more sexually dimorphic species than was thought before this discovery.

7" L, 5" W, 6 1/2" H

BH-046.....\$325.00

Stand for BH-046

S-BH-046.....\$35.00

1. *Australopithecus afarensis*

A.L. 288-1 "Lucy"

3.2 MYA. Hadar, Ethiopia.

6 7/8" L, 5 1/4" W, 5 1/2" H

BH-021-A\$280.00

2. "Lucy" (Dark Finish).

BH-021-T\$280.00

3. *Australopithecus*
(Paranthropus) boisei
Female KNM-ER 732

1.7 MYA. Koobi Fora, Kenya.

6 5/8" L, 5 1/2" W, 4" H

BH-026\$195.00

4. *Sahelanthropus tchadensis*
"Toumai"

6-7 MYA. Toros-Manalla, Chad.

7" L, 4 1/4" W, 4" H

BH-029\$280.00

5. *Australopithecus africanus*
Sts 71 2.3-2.8 MYA.

Sterkfontein, South Africa.

6 1/2" L, 3 1/2" W, 4 1/4" H

BH-035\$185.00

6. *A. africanus* Sts 52
Maxilla & Mandible

4" L, 4 1/2" W, 5" H

BH-036\$210.00



Stands Available
\$35.00 each



www.boneclones.com



Bone Clones Osteological Reproductions

FOSSIL HOMINID SKULLS

53



Australopithecus afarensis
"Lucy" A.L. 288-1

Articulated Skeleton

3.2 MYA. Discovered by D. Johanson in 1974 in Hadar, Ethiopia. Bone Clones reconstructed the Articulated "Lucy" Skeleton by using bones from the disarticulated version, which were based on the original find. In addition, by extrapolating from published data, relationships to other bones, and partial bone fragments, we created brass parts to indicate missing skeletal elements.

(Stand and Base Included) 3' 7" Tall

SC-036-A.....\$6,500.00

Australopithecus afarensis
"Lucy" A.L. 288-1

Articulated Skeleton, Walking

Note that the arms and legs of the skeleton in walking position are rigid and fixed.

(Stand and Base Included)

3' 7" H

SC-036-AW.....\$7,250.00

"Lucy" Skull, Dark Finish
BH-021-T.....\$280.00

see
page
53

1. Cranium Fragments

6 Cranium fragments

KO-036-C \$115.00

2. Jaw

4" L, 3 3/4" W, 2 1/4" H

KO-036-J \$95.00

3. Innominate, Femur and Sacrum

5 parts

KO-036-PF \$270.00

4. Innominate and Sacrum

2 parts

KO-036-PS \$175.00

5. Pelvis, Articulated

9" x 5"

KO-036-PA \$250.00

6. Femur Assembled

10 3/4" Long

KO-036-FA \$105.00

7. *Australopithecus afarensis* "Lucy"

A.L. 288-1 Skeleton, Disarticulated

Skeleton is provided disarticulated along with a numbered photo to help identify the parts.

SC-036-D \$2,100.00

8. Pelvis, Disarticulated

KO-036-PD \$265.00

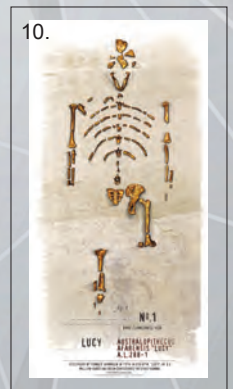
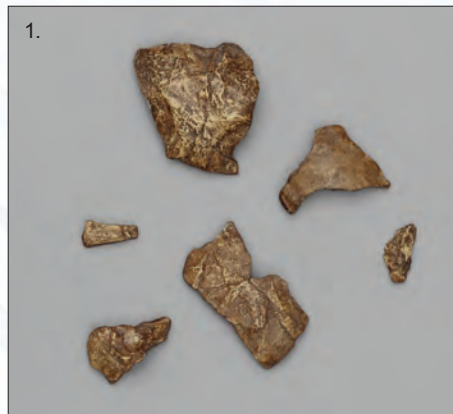
9. Innominate

KO-036-P \$90.00

10. Lucy Poster

14" L x 11" W

PE-01 \$12.00





Neanderthal Humerus
12 3/4"
KO-083.....\$140.00

Neanderthal Ulna
10 1/2"
KO-090.....\$110.00

Neanderthal Radius
9 1/2"
KO-089.....\$115.00



Neanderthal Atlas
3" x 1 3/4"
KO-077.....\$80.00

Neanderthal Scapula
6" x 7"
KO-080.....\$245.00



Neanderthal Clavicle
6 3/4"
KO-078.....\$87.00

Neanderthal Tibia and Fibula (attached)
14 1/2"
KO-091.....\$285.00

Neanderthal Femur
17 3/4"
KO-082.....\$260.00



Comparative Hyoid Set, Neanderthal and Modern Human
Serving an anchoring function for the tongue, the hyoid is implicated in the evolution of speech development.
COMP-135.....\$70.00



Neanderthal Foot, Articulated
Based on a mixture of La Ferrassie 1 and a robust modern human. 9"
KO-087.....\$365.00

Neanderthal Hand, Articulated
7"
KO-086.....\$365.00

Neanderthal Patella
(Not Shown)
1 1/2" x 1 1/2"
KO-088.....\$45.00



Neanderthal Skeleton Reconstruction, Partially Disarticulated
See our website for all postcranial details.
SC-019-D.....\$8,800.00



Neanderthal Set
Includes: Skull (BH-030), pelvis, femur, humerus
KO-085.....\$1,650.00



Homo neanderthalensis
La Ferrassie 1, Sawyer/Maley
 50,000 YA. La Ferrassie, France.
 8 3/4" L, 6" W, 7" H
BH-030\$478.00



Neanderthal Pelvis
 This pelvis is a complicated mosaic drawn from three distinct Neanderthal specimens: Kebara 2, Feldhofer and La Ferrassie 1.
 12" x 8 1/2"
KO-081.....\$840.00



Neanderthal Hyoid, from Kebara
 The hyoid lies between the mandible and larynx, where it anchors the muscles necessary for speech. This important discovery demonstrates that Neanderthals had the capacity for speech and possibly language.
 2" x 1 1/2"
KO-135.....\$45.00



Neanderthal Pelvis, Femur and Humerus Set
KO-084.....\$1,175.00

Neanderthal Pelvis and Femur (left)
SC-019-PF.....\$1,080.00



Neanderthal Thorax Assembly
 21 1/2" L, 13" W
KO-079.....\$2,920.00



Comparative Pelvis, Femur and Humerus Set, Neanderthal and Modern
 Contains modern *Homo sapiens* and *Homo neanderthalensis* pelvis, femur and humerus. An excellent, economical way to compare structures.
COMP-107.....\$1,375.00



Neanderthal Skeleton, Articulated
Homo neanderthalensis

The most complete Neanderthal skeleton ever offered, this skeleton was reconstructed and articulated by anthropologists Gary J. Sawyer, of the American Museum of Natural History, and Blaine C. Maley. It was based primarily on the La Ferrassie 1 specimen, with missing or incomplete elements filled in from other Neanderthal casts. This reconstruction vividly illustrates how Neanderthals differed from modern humans. Contrasts with modern humans can be noted in the structure of the pelvis and rib cage.
 (Stand and Base Included) 5' 2 1/2" tall
SC-019-A.....\$13,900.00





***Homo ergaster* Skeleton, KNM-WT 15000, Articulated**

Bone Clones reconstructed the "Nariokotome Boy" or "Turkana Boy" skeleton by using bones from the disarticulated version, which were based on the original find. In addition, by extrapolating from published data, relationships to other bones, and partial bone fragments, we reconstructed several vertebrae and the sternum, painting these black to differentiate them from the found bones. We used brass parts to indicate other missing bones.

(Stand and Base Included) 58 1/2" H

SC-012-A.....\$6,200.00



***Homo ergaster* Skull, KNM-WT 15000**

1.6 MYA. Nariokotome, Kenya.

8 1/4" L, 5 1/4" W, 6" H

BH-012\$280.00

***Homo ergaster* Skeleton, KNM-WT 15000, Disarticulated**

1.6 MYA.

Discovered in Nariokotome, Kenya. The completeness of the skull allowed scientists to get accurate measurements of brain size. Many other skeletal parts were also recovered, giving anthropologists a great deal of information regarding body size, limb proportions, approximate age of death (early adolescence) and whether or not language was possible. Skeleton is provided disarticulated along with a numbered photo.

SC-012-D.....\$2,800.00



***H. ergaster* KNM-WT 15000 Pelvis and Femur**

SC-012-PF..... \$330.00

Pelvis Only

8 1/2" x 7 1/2"

KO-312-P \$245.00

Femur Only

16 3/4" long

SC-012-F\$110.00

Ardipithecus ramidus

4.4 MYA. *Ardipithecus ramidus* was discovered by Tim White and associates in 1994 in the Afar region of Ethiopia and published in 2009. The partial skeleton ARA-VP-6/500, now is considered by many to be the oldest skeleton of a supposed human ancestor. The discovery team's examination of the pelvis indicates that this species was able to walk upright, not with the same fluidity of later humans or even "Lucy" but with much more efficiency than chimpanzees. However, the lower part of the pelvis offers evidence that the species possessed the musculature required for tree-climbing. The bones of the wrist indicate, according to the discovery team, that while moving quadrupedally, weight was placed on the palms of the hands rather than on the knuckles. White and associates hypothesize that *Australopithecus* is a descendant of *Ardipithecus*, while others hypothesize that *Ardipithecus* might be an extinct sister species to Lucy's genus. Note that the skull, pelvis, left hand and foot are currently available. The remainder of the skeleton is in process.



Ardipithecus ramidus Skull
6 1/4" L, 4 1/2" W, 5" H BH-039....\$379.00

1.



1. A. ramidus
Pelvis, Disarticulated
SC-039-PD...\$350.00

2.



3.



2. A. ramidus
Hand, Articulated
SC-039-184-A....\$310.00

3. A. ramidus
Hand, Disarticulated
SC-039-184-D...\$250.00

4.



5.



4. A. ramidus
Foot, Articulated
SC-039-185-A...\$310.00

5. A. ramidus
Foot, Disarticulated
SC-039-185-D...\$250.00



©Bone Clones

Ardipithecus ramidus
Skeleton, Disarticulated ARA-VP-6/500, (4.4 MYA)
SC-039-D

Please visit our website for updated information.



www.boneclones.com



Bone Clones Osteological Reproductions

ARDIPITHECUS RAMIDUS
FOSSIL HOMINID

59

Fossil Hominid Sets



BH-002
H. habilis



BH-038
H. erectus



BH-007
A. africanus



BH-009
H. neanderthalensis



BH-012
H. ergaster



BH-015
A. boisei



BH-016
A. africanus



BH-020
K. platyops



BH-021-T
A. afarensis

Set of 9 Fossil Hominid Skulls

Nine milestone discoveries representing a timeline of, and the diversity in, human lineage. Discounted when bought as a set:

BH-KRO-1.....\$2,098.00



BH-038
H. erectus



BH-007
A. africanus



BH-009
H. neanderthalensis



BH-012
H. ergaster



BH-015
A. boisei



BH-021-T
A. afarensis

Set of 6 Fossil Hominid Skulls

We organized this set of 6 skulls to represent a range of fossil hominids based on age and historical importance. Ages range from 50,000 YA to 3.2 MYA.

BH-KRO-2.....\$1,435.00



BC-016
Human



BC-001
Gorilla



BC-003
Chimpanzee

Set of 7 Skulls

This set of 7 skulls is a companion to our KAM SET-7, 1:2 scale Primate Skulls.

(see next page)
BH-KRO-3.....\$1,744.50



BH-019
H. neanderthalensis
La Ferrassie 1



BH-001
A. afarensis



BH-015-C
A. boisei



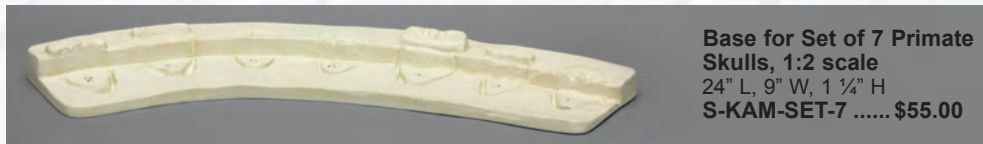
BH-038
H. erectus



As a supplement to our hominid skull casts, the Bone Clones Rotational Series is an excellent educational resource.



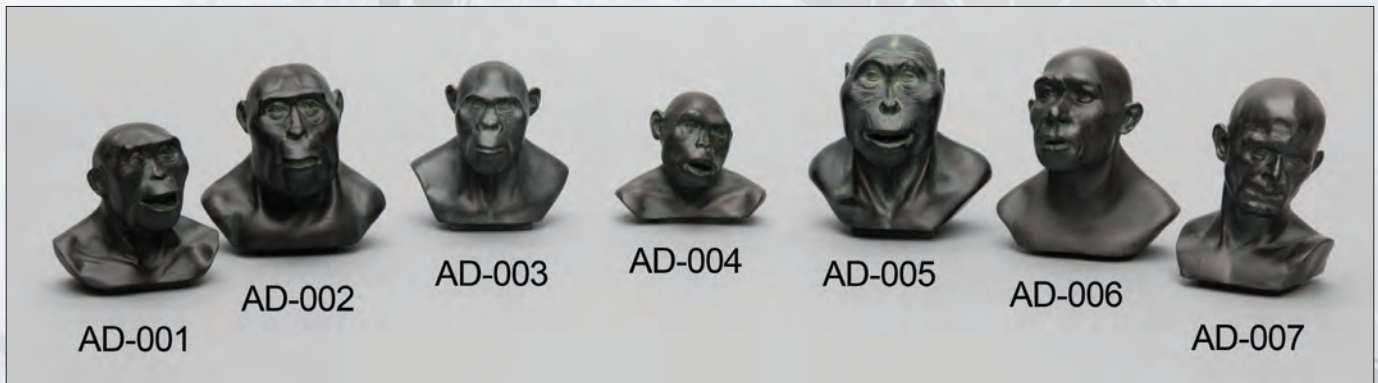
1:2 Scale Primate Sets



Base for Set of 7 Primate
Skulls, 1:2 scale
24" L, 9" W, 1 1/4" H
S-KAM-SET-7 \$55.00

Set of 7 Primate Skulls,
1:2 scale,
KAM-SET-7.....\$498.00

All Skulls Also Sold
Individually, \$75.00 Each



Australopithecus afarensis
female
2 1/4" L, 2 3/4" W, 2 3/4" H
AD-001.....\$54.00

Australopithecus afarensis
male
2 3/4" L, 3 1/4" W, 3 1/4" H
AD-002.....\$54.00

Australopithecus africanus
2 1/2" L, 3" W, 3 1/4" H
AD-003.....\$54.00

Homo habilis
2" L, 2 3/4" W, 2 1/2" H
AD-004.....\$54.00

Australopithecus boisei
3" L, 3 1/2" W, 3 1/2" H
AD-005.....\$54.00

Homo neanderthalensis
2 3/4" L, 3 1/4" W, 3 3/4" H
AD-006.....\$54.00

Homo sapiens
Cro-Magnon
2" L, 2 1/3" W, 3 1/2" H
AD-007.....\$54.00



1:4 scale models of life-size fossil hominid sculptures by Atelier Daynes of Paris, France. Exhibited in many museums around the world, Elisabeth Daynes' hominid sculptures depict a unique and specific early human face. Distributed exclusively by Bone Clones, Inc. Made of polyurethane resin with a bronze finish. Each bust comes packaged in its own clear tube and includes a fabric Atelier Daynes drawstring pouch, straw padding and an informative insert card. Imported.

Set of 7 Sculpted Hominid Busts (1:4 scale) by Atelier Daynes
AD-SET-7.....\$359.00



www.boneclones.com



Bone Clones Osteological Reproductions

SCALE PRIMATE SETS

61



1. Human Adult
Knee Joint
KO-336-KJ \$69.00

2. Chimpanzee
Knee Joint
Pan troglodytes
SC-003-KJ..... \$125.00

3. *Homo erectus*
Knee Joint
KNM-ER 1481
1.89 MYA
KO-211-KJ \$161.00

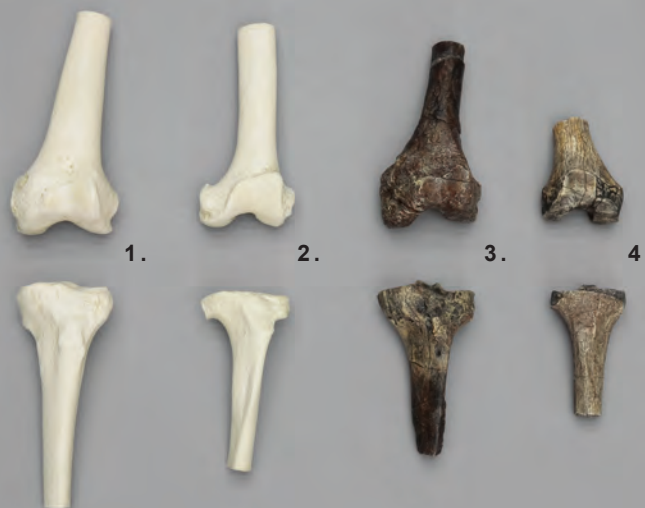
4. *A. afarensis*
Knee Joint
A.L. 129 1a + 1b
3.4 MYA
KO-392-KJ \$150.00

***Homo erectus* KNM-ER 1481, Femur and Partial Tibia**
1.89 MYA
femur 15 1/4", partial tibia 4 1/2"
KO-211-PR..... \$185.00

Femur Only
15 1/4"
KO-211 \$136.00



***Homo habilis* OH-8, Foot**
3 3/4" L, 2 1/4" W, 1 1/2" H
KO-242.....\$162.00



Australopithecus africanus
Disarticulated Pelvis
KO-195-PD.....\$260.00

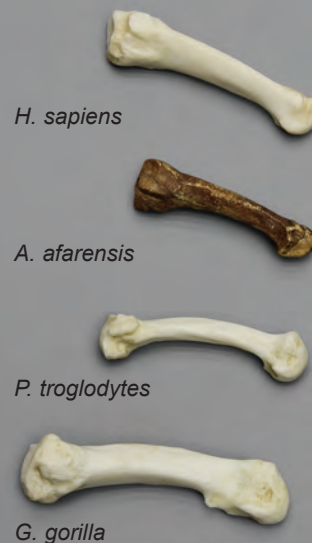
***Australopithecus anamensis* KO-136-SET (8 Pieces)**



Australopithecus anamensis
Cranial and Postcranial Set
KO-136-SET.....\$370.00



Homo neanderthalensis
Shanidar 1 Humerus
KO-064.....\$85.00



Set of 4th metatarsals from:
Human, *A. afarensis*, Chimpanzee, Gorilla
KO-390-4MT-SET.....\$84.00

Neanderthal Tools

**Neanderthal Tools,
Set of 21 Stone Tools**
MS-100-SET.....\$998.00

Neanderthal Tools

Set of 6 selected tools to represent the different types.

Set includes:

MS-101,
MS-105,
MS-112,
MS-115,
MS-117,
MS-120

MS-100-6-SET.....\$308.00



See our website
for individual
tools and more
information.



Stone Tools, Set of 6

Includes artifacts from Africa, dated from 1.2 to 1.5 MYA.

MS-201-SET...\$358.00

MS-206.....\$72.00

MS-205.....\$72.00

MS-204.....\$95.00

MS-201.....\$43.00

MS-202.....\$52.00

MS-203.....\$45.00



Farpoint Clovis Spearpoint

The 8-inch Farpoint Clovis Spearpoint was found in 2005 by Edgar Perez at a residential construction site in Malibu. The first such artifact found on the West Coast, the Clovis Spearpoint indicates the presence of Clovis people 11,000 years ago and raises questions about the origins of the earliest inhabitants of the Americas. It is currently curated at the Santa Barbara Museum of Natural History.

5 1/4" L, 2" W

MS-220.....\$95.00



Fossil Hominid Stone Tools, Set of 6.
MS-99-SET.....\$405.00

Banded Hand-Axe

Acheulian, SW Morocco, (Flint).
4 3/4" L x 2 1/2" W

MS-001.....\$92.00

Triangular Bi-facial Hand-Axe

Mousterian, Roye, Picardie
Region, France.
40,000 - 120,000 years old,
Neanderthal.

3/4" L x 1 1/2" W

MS-002.....\$70.00

Levallois Blade

Mousterian, Verberie, Picardie
Region, France. Distinct from
Acheulian; Bi-facial ovate point.
2 1/2" L x 1 3/4" W

MS-003.....\$70.00

Cordiform Bi-facial Hand-Axe

Mid-Acheulian, Montealegre
del Castillo, Albacete, Spain.
6 3/8" L x 3 1/2" W

MS-004.....\$70.00

Scraper

Mousterian, Cairo, Egypt,
40,000 years old.

4" L x 1 1/2" W

MS-005.....\$55.00

Bi-facial Hand-Axe

Acheulian,
Ergttersine, Libya,
over 250,000 years old.
6 3/8" L x 3 1/2" W

MS-006.....\$70.00



www.boneclones.com



Bone Clones Osteological Reproductions

FOSSIL HOMINID TOOLS

63

Set of 6 Primate Skulls BC-1234-SET.....\$1,272.50



ORANGUTAN AND CHIMPANZEE

Orangutan Infant, 11 months

Pongo pygmaeus
5" L, 3 1/4" W, 5" H
BC-208.....\$170.00



Chimpanzee Infant, 11 months

Pan troglodytes
5" L, 3 1/4" W, 5" H
BC-207.....\$170.00



Each Set contains near term fetal skull, which shows the beginning eruption of incisors and early molars. The set also contains pelvis, humerus, femur, cervical, thoracic and lumbar vertebrae.



COMP-205-SET



COMP-206-SET

Fetal Chimpanzee Set
Skull and Postcranials.
COMP-205-SET.....\$395.00

Postcranial Bone Set
Postcranials only.
KO-205-SET.....\$276.00

KO-205-P Pelvis ..\$130.00
BC-205 Skull.....\$135.00

Fetal Orangutan Set
Skull and Postcranials.
COMP-206-SET.....\$395.00

Postcranial Bone Set
Postcranials only.
KO-206-SET.....\$276.00

KO-206-P Pelvis..\$130.00
BC-206 Skull.....\$135.00

- 1. Gorilla, Male**
Gorilla gorilla
 12" L, 7" W, 9" H
BC-001 \$270.00
- 2. Gorilla, Male, X-large**
Gorilla gorilla
 14" L, 7" W, 10" H
BC-036 \$290.00
- 3. Mountain Gorilla, Male**
Gorilla gorilla beringei
 12 ¼" L, 7 ¾" W, 8 ¾" H
BC-124 \$310.00
- 4. Gorilla, Female**
Gorilla gorilla
 9" L, 7 ½" W, 7 ½" H
BC-035 \$240.00
- 5. Sumatran Orangutan, Male**
Pongo abelii
 10" L, 7" W, 9" H
BC-002S \$255.00
- 6. Bornean Orangutan, Male**
Pongo pygmaeus
 10" L, 7" W, 8" H
BC-002B \$245.00
- 7. Bornean Orangutan, Female**
Pongo pygmaeus
 7 ½" L, 4 ¾" W, 6 ¼" H
BC-255 \$210.00
- 8. Chimpanzee, Male**
Pan troglodytes
 8" L, 6" W, 6" H
BC-003 \$218.00
- 9. Chimpanzee, Female**
Pan troglodytes
 7 ½" L, 4 ¾" W, 5 ½" H
BC-248 \$218.00
- 10. Bonobo, Female**
Pan paniscus
 7" L, 4 ½" W, 5" H
BC-123 \$218.00
- 11. Bonobo, Male**
Pan paniscus
 7" L, 4 ½" W, 5" H
BC-252 \$218.00
- 12. White-handed Gibbon, Male**
Hylobates lar
 4 ¼" L, 2 ¾" W, 3" H
BC-291 \$180.00
- 13. Siamang, Female**
Symphalangus (Hylobates) syndactylus
 5" L, 3 ¼" W, 3 ¾" H
BC-047 \$170.00
- 14. Siamang, Male, X-large**
Symphalangus (Hylobates) syndactylus
 5 ¼" L, 4" W, 3 ¾" H
BC-290 \$180.00
- 15. Orangutan Brain**
Pongo pygmaeus
 4 ½" L, 3 ¼" W, 3" H
KO-287 \$210.00





1. Hanuman Langur
Semnopithecus entellus
 5 ¼" L, 4" W, 4" H
BC-084\$179.00

2. Howler Monkey
Alouatta palliata
 5 ½" L, 3 ¼" W, 5 ¼" H
BC-017\$168.00

3. Titi Monkey
Callicebus torquatus
 2 ¼" L, 1 ½" W, 2 ¼" H
BC-319\$98.00

4. Squirrel Monkey
Saimiri sciureus
 2 ½" L, 1 ¾" W, 2" H
BC-320\$98.00



5. Howler Monkey Hyoid
Alouatta palliata
 An extra large hyoid, allows this large New World monkey to make its voice heard across a distance of two miles.
 2 ¾" L, 1 ½" W, 1 ¾" H
KO- 179.....\$55.00

Baboon

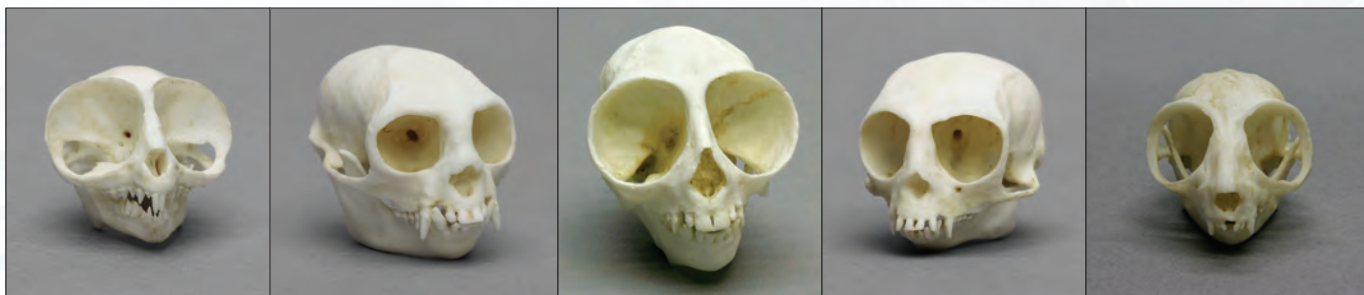
6. Mandrill Baboon, Female
Mandrillus sphinx
 6 ¾" L, 4" W, 4 ½" H
BC-261\$190.00

7. Mandrill Baboon, Male
Mandrillus sphinx
 11" L, 5 ½" W, 6" H
BC-010\$235.00

8. Chacma Baboon, Female
Papio ursinus
 Found on the savannahs of southern Africa, it has a dog-like muzzle, which motivates one of its common names, the Dog-faced Monkey.
 7" L, 4 ½" W, 4 ½" H
BC-259\$190.00

9. Chacma Baboon, Male
Papio ursinus
 Able to run 35-40 mph, these primates also possess sharp hearing and eyesight.
 9" L, 4 ¼" W, 5" H
BC-258\$218.00





Tarsier
Tarsius syrichta
1 ½" L, 1 ½" W, 1" H
BC-050.....\$82.00

Cotton-top Tamarin
Saguinus oedipus
2" L, 1 ¾" W, 1 ¾" H
BC-080.....\$98.00

Owl Monkey
Aotus trivirgatus
2 ¼" L, 1 ½" W, 1 ¾" H
BC-109.....\$109.00

Pygmy Marmoset
Cebuella pygmaea
1 ½" L, 1 ½" W, 1 ½" H
BC-081.....\$98.00

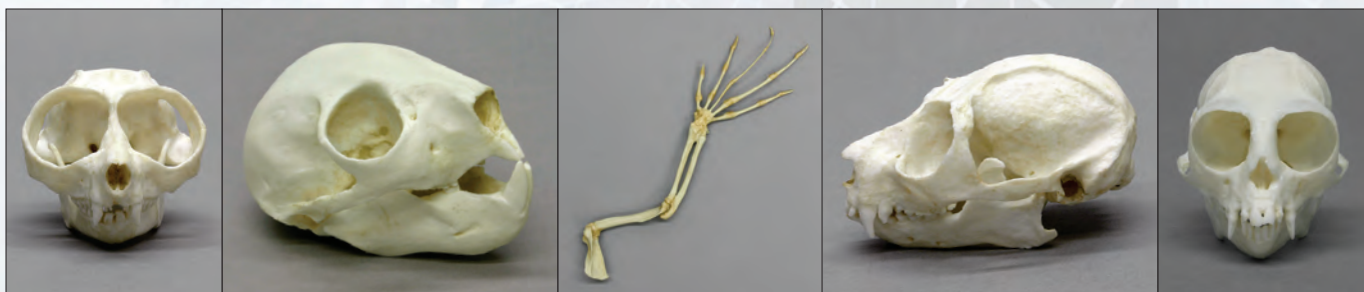
Mouse Lemur
Microcebus murinus
1 ¼" L, ¾" W, ¾" H
BC-136.....\$90.00



Small Primates Set
(Base included)
COMP-108.....\$499.00

- A. BC-050 Tarsier
- B. BC-080 Cotton-top Tamarin
- C. BC-109 Owl Monkey
- D. BC-081 Pygmy Marmoset
- E. BC-136 Mouse Lemur

This set includes Madagascar's tiny Mouse Lemur, the Southeast Asian Tarsier, and three New World species: the big-eyed, nocturnal Owl Monkey, the Cotton-top Tamarin, and the smallest living monkey, the Pygmy Marmoset.



Slender Loris
Loris tardigradus
2" L, 1 ¼" W, 1" H
BC-266.....\$92.00

Aye-Aye
Daubentonia madagascariensis
3 ¼" L, 2 ¼" W, 2" H
BC-163...\$170.00

Aye-Aye Arm
Daubentonia madagascariensis
9"
KO-163.....\$165.00

Slow Loris
Nycticebus coucang
2 ¼" L, 1 ¾" W, 1 ½" H
BC-264.....\$92.00

Common Marmoset
Callithrix jacchus
1 ¾" L, 1" W, 1 ¼" H
BC-311.....\$98.00



Saki Monkey
Pithecia pithecia
3" L, 2" W, 2 ½" H
BC-304.....\$145.00

Ring-tailed Lemur
Lemur catta
3 ½" L, 2 ¼" W, 2 ¼" H
BC-087.....\$119.00

Indri Lemur (See pg. 75)
Indri indri
4" L, 2 ½" W, 2 ½" H
BC-282.....\$145.00

Sifaka Lemur
Propithecus verreauxi
3" L, 2 ½" W, 2 ¼" H
BC-284.....\$145.00



1. Gorilla Skeleton

Gorilla gorilla

Each bone—over 180 pieces—was individually cast from a very large male Silverback Lowland Gorilla. Licensed by the Philadelphia Zoo.

Articulated

(Stand Included)

48" L, 26" W, 48" H

SC-028-A..... \$4,800.00

Disarticulated

(Not Shown)

SC-028-D..... \$3,200.00

Bipedal, Articulated

(Not Shown, Stand Included)

6' 1" tall (on stand)

SC-028-BP \$4,500.00

2. Orangutan Skeleton, Articulated

Pongo abelii

From a male Sumatran Orangutan, with an impressive sagittal crest. Restricted to a small part of Sumatra, this endangered species verges on extinction.

(Stand and Base Included)

5' tall

SC-002-A..... \$4,800.00

Orangutan Skeleton, Disarticulated

(Not Shown)

SC-002-D..... \$3,100.00

3. Chimpanzee Skeleton

Pan troglodytes

This specimen, having weighed over 120 lbs and standing 5 ½ feet tall, is a particularly large male.

Articulated

(Stand Included)

34" L, 19" W, 31" H

SC-003-A..... \$3,000.00

Disarticulated (Not Shown)

SC-003-D..... \$2,000.00

Bipedal, Articulated

(Not Shown, Stand Included)

4' 9" tall (on stand)

SC-003-BP \$3,000.00



See our website for postcranial list and more information.





1. Bonobo Skeleton, Articulated

Pan paniscus

A 9-year-old female from the Democratic Republic of the Congo. Sometimes called the pygmy chimpanzee, the smaller Bonobo species is distinct from the common chimpanzee, *P. troglodytes*. Exclusively licensed to Bone Clones by the San Diego Natural History Museum.

(Stand and Base Included)

45" tall

SC-123-A..... \$3,300.00

Bonobo Skeleton, Disarticulated

(Not Shown)

SC-123-D..... \$2,000.00

2. Siamang Skeleton, Articulated

Symphalangus (Hylobates) syndactylus

The smallest of the great apes, Gibbons and Siamangs are known for their remarkable gymnastic ability and extremely long arms. While they have much in common, several characteristics distinguish the Siamang from Gibbons. Most noticeable is the Siamang's impressive throat sac, which inflates to a size equal to the size of its head.

(Stand and Base Included)

30" tall

SC-047-A..... \$2,250.00

Siamang Skeleton, Disarticulated

(Not Shown)

SC-047-D..... \$1,750.00



3. Mandrill Baboon Skeleton, Articulated

Mandrillus sphinx (Stand Included)

33" L, 12" W, 25" H

SC-010-A..... \$3,300.00

Mandrill Baboon Skeleton, Disarticulated (Not Shown)

SC-010-D..... \$2,000.00



Mandrill Baboon Hand, Articulated

6" long

SC-010-24-A \$145.00



See our website for postcranial list and more information.



www.boneclones.com



Bone Clones Osteological Reproductions

APES AND
MANDRILL BABOON

69

New World Monkey Skeletons



Weeping Capuchin
 3 3/4" L, 2 1/2" W, 2 1/2" H
 BC-263.....\$150.00

**Weeping Capuchin
 Skeleton, Disarticulated**
 SC-263-D.....\$1,650.00



See our website for
 postcranial list and
 more information.



Black Spider Monkey
 4 1/4" L, 2 1/2" W, 3 3/4" H
 BC-265.....\$150.00

**Black Spider Monkey
 Skeleton, Disarticulated**
 SC-265-D.....\$1,625.00



See our website for
 postcranial list and
 more information.

Old World Monkey Skeletons



Vervet Monkey
 4 ½" L, 3" W, 3" H
BC-069\$160.00

Vervet Monkey
 Skeleton, Disarticulated
SC-069-D.....\$1,650.00



See our website for
 postcranial list and
 more information.



Rhesus Macaque
 5 ½" L, 4" W, 4" H
BC-137\$160.00

Rhesus Macaque
 Skeleton, Disarticulated
SC-137-D.....\$1,650.00

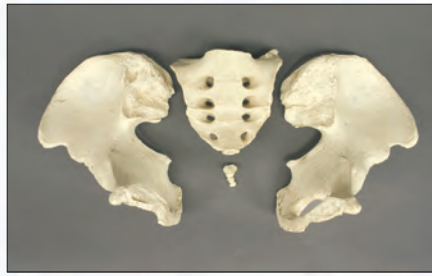


See our website for
 postcranial list and
 more information.

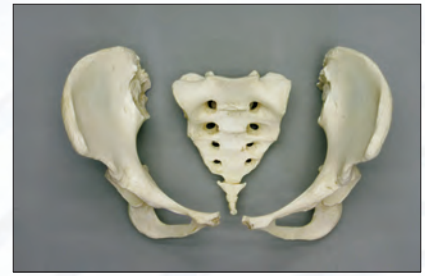




Human 5-year-old Child Pelvis, Disarticulated
SC-183-PD \$160.00



Human Male Pelvis, Disarticulated
FO-103-PD \$198.00



Human Female Pelvis, Disarticulated
KO-193-PD \$198.00



Human 5-year-old Child Pelvis
6" x 4"
SC-183-P \$160.00



Human Male Pelvis
10 1/2" x 7"
FO-103-P \$145.00



Human Female Pelvis
9" x 7"
KO-193-P \$148.00



Set of 10 Femurs
Set of primate femurs. Excellent for comparative studies and discounted when purchased as a set.
KF-001 \$698.00

A. Human 5-year-old Child
Homo sapiens 9"
SC-183-F \$50.00

B. Human Male
Homo sapiens 18 1/2"
SC-092-F \$56.00

C. *H. ergaster* KNM-WT 15000
Homo ergaster 16 3/4"
SC-012-F \$110.00

D. *A. afarensis* "Lucy" Assembled
Australopithecus afarensis 10"
KO-036-FA \$105.00

E. Bonobo
Pan paniscus 11"
SC-123-F \$70.00

F. Mandrill Baboon
Mandrillus sphinx 10 1/2"
KO-210-F \$60.00

G. Siamang
Symphalangus syndactylus 8 3/4"
SC-047-F \$55.00

H. Chimpanzee
Pan troglodytes 11"
SC-003-F \$65.00

I. Orangutan
Pongo abelii 13"
SC-002-F \$80.00

J. Gorilla
Gorilla gorilla 15"
SC-028-F \$85.00



**Spider Monkey
Pelvis and Femur**
Ateles paniscus
SC-265-PF.....\$208.00



**Vervet Monkey
Pelvis and Femur**
Cercopithecus pygerythrus
SC-069-PF.....\$208.00



**Weeping Capuchin
Pelvis and Femur**
Cebus olivaceus
SC-263-PF.....\$208.00



**Rhesus Macaque
Pelvis and Femur**
Macaca mulatta
SC-137-PF.....\$208.00



**Siamang Pelvis
and Femur**
Symphalangus syndactylus
SC-047-PF.....\$208.00



**Mandrill Baboon
Pelvis and Femur**
Mandrillus sphinx
KO-210-PF\$210.00



**Bonobo Pelvis
and Femur**
Pan paniscus
SC-123-PF.....\$253.00



**Chimpanzee Pelvis
and Femur, Male**
Pan troglodytes
SC-003-PF.....\$215.00



**Orangutan Pelvis
and Femur**
Pongo abelii
SC-002-PF.....\$272.00



**Gorilla Pelvis
and Femur**
Gorilla gorilla
SC-028-PF.....\$285.00



Knuckle-Walking Quadruped



Chimpanzee
SC-003-IM \$256.50

Terrestrial Quadruped



Vervet
SC-069-IM \$174.00

Vertical Clinger/Leaper



Indri Lemur
SC-282-IM \$229.00

PRIMATE INTERMEMBRAL SETS

These sets consist of humerus, radius, femur, and tibia of primates for use in calculating forelimb, hindlimb, and long bone indices.

Brachiator

Orangutan

SC-002-IM \$270.00

Terrestrial Quadruped

Mandrill Baboon

SC-010-IM \$252.00

Quadruped

Rhesus Macaque

SC-137-IM \$174.00

Suspensory/Brachiator

Black Spider Monkey

SC-265-IM \$174.00

Knuckle-Walking Quadruped

Gorilla

SC-028-IM \$266.00

Vertical Clinger/Leaper

Senegal Bushbaby with calcaneus

SC-095-IM \$125.00

Arboreal Quadruped



Weeping Capuchin
SC-263-IM \$174.00

Brachiator



Siamang
SC-047-IM \$179.00

Quadruped



Ring-tailed Lemur
SC-096-IM \$174.00

Small Arboreal Quadruped & Vertical Clinger/Leaper



Common Marmoset
with calcaneus
SC-097-IM \$135.00

Indris, the largest of all modern prosimians, inhabit a small area in the eastern rainforests of Madagascar. With feet best described as prehensile, Indri Lemurs are characterized as vertical clingers and leapers in the trees. The virtually tail-less Indri bounds from branch to branch up to 30 feet with a loaded spring-like motion made possible by the length and strength of its back legs. The length differential between the front and hind limbs is quite apparent in the Indri skeleton.



PRIMATE ARM ARTICULATIONS

Bone Clones® primate arm articulations permit the study of how the scapula's shape and attachment to the humerus affect the function and mobility of forelimb use. Their study also furthers understanding of the evolutionary development of primates.

1. Chimpanzee Arm, Articulated

Pan troglodytes

SC-003-67-AS.....\$481.50

2. Siamang Arm, Articulated

Symphalangus syndactylus

SC-047-67-AS.....\$386.00

3. Weeping Capuchin Arm, Articulated

Cebus olivaceus

SC-263-67-AS.....\$386.00

Arm articulations for the following primates are also available:

Orangutan	SC-002-67-AS	\$481.50
Mandrill Baboon	SC-010-67-AS	\$481.50
Gorilla	SC-028-67-AS	\$481.50
Vervet	SC-069-67-AS	\$386.00
Bonobo	SC-123-67-AS	\$481.50
Rhesus Macaque	SC-137-67-AS	\$386.00
Black Spider Monkey.....	SC-265-67-AS	\$386.00
Indri Lemur	SC-282-67-AS	\$427.00





Human Female Pectoral Set of 3
Homo sapiens
SC-211-HSC.....\$160.00

Primates Pectoral Sets: Humerus, Scapula, Clavicle - Set of 3

The locomotor habits of the different groups of primates are reflected in the shape and proportions of the scapula as well as in the degree of rotation displayed by the head of the humerus in the shoulder joint. The clavicle functions as a strut, holding the upper limb away from the trunk.

5-year-old Child.....	SC-183-HSC.....	\$150.00
Chimpanzee.....	SC-003-HSC.....	\$205.00
Orangutan.....	SC-002-HSC.....	\$205.00
Mandrill Baboon.....	SC-010-HSC.....	\$205.00
Gorilla.....	SC-028-HSC.....	\$205.00
Siamang.....	SC-047-HSC.....	\$150.00
Rhesus Macaque.....	SC-137-HSC.....	\$150.00
Vervet Monkey.....	SC-069-HSC.....	\$150.00
Weeping Capuchin Monkey.....	SC-263-HSC.....	\$150.00
Black Spider Monkey.....	SC-265-HSC.....	\$150.00

Primates: Innominate & Femur Set

The pelvic girdle is adapted for stability. The ischium, one of three bones that fuse to create the innominate, is especially large in Old World monkeys. The hip, like the shoulder, is a ball-and-socket joint.

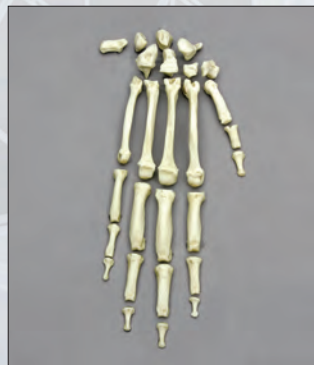
Human.....	SC-211-IF.....	\$130.00
Orangutan.....	SC-002-IF.....	\$185.00
Mandrill Baboon.....	SC-010-IF.....	\$185.00
Gorilla.....	SC-028-IF.....	\$190.00
Siamang.....	SC-047-IF.....	\$135.00
Rhesus Macaque.....	SC-137-IF.....	\$135.00
Vervet Monkey.....	SC-069-IF.....	\$135.00
Weeping Capuchin Monkey.....	SC-263-IF.....	\$135.00
Black Spider Monkey.....	SC-265-IF.....	\$135.00



Chimpanzee Innominate & Femur Set
Pan troglodytes
SC-003-IF.....\$160.00

Primates: Hand or Foot

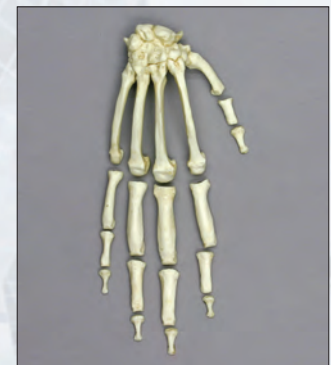
Hands and feet for each of the listed primates are available articulated, semi-articulated, and disarticulated. These photographs of the chimpanzee hand illustrate the 3 options. The pricing listed for the 9 primates is for the disarticulated version. For additional information and pricing go to www.boneclones.com/hands-feet/



Chimpanzee Hand, Disarticulated
Pan troglodytes
KO-303-D.....\$155.00



Chimpanzee Hand, Articulated, Rigid
Pan troglodytes
KO-303-A.....\$145.00



Chimpanzee Hand, Semi-articulated
Pan troglodytes
SC-003-184-SA.....\$125.00

Hand

Human.....	H-04-F.....	\$145.00
Orangutan.....	KO-202-D.....	\$155.00
Mandrill Baboon.....	SC-010-24-D.....	\$155.00
Gorilla.....	KO-208-D.....	\$155.00
Siamang.....	KO-149-D.....	\$145.00
Rhesus Macaque.....	SC-137-184-D.....	\$145.00
Vervet Monkey.....	SC-069-184-D.....	\$145.00
Weeping Capuchin Monkey.....	SC-263-184-D.....	\$145.00
Black Spider Monkey.....	SC-265-184-D.....	\$145.00

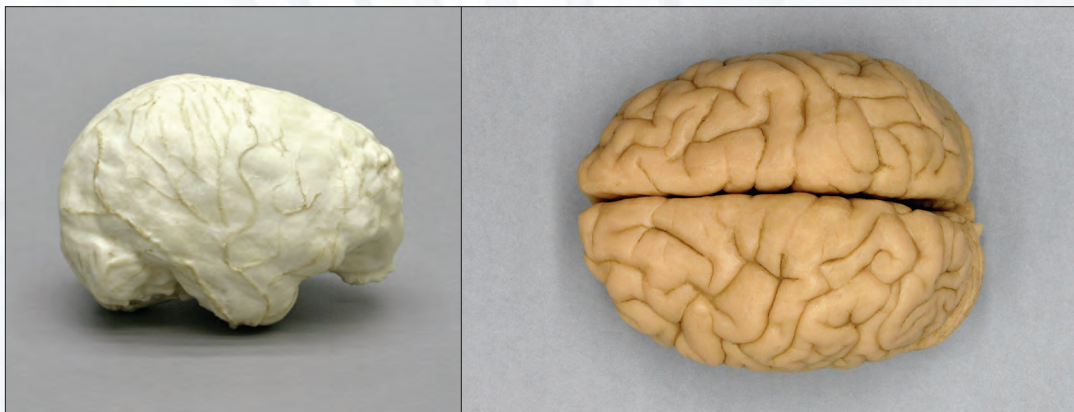
Feet

F-04-F.....	\$145.00
KO-204-D.....	\$155.00
SC-010-29-D.....	\$155.00
KO-209-D.....	\$155.00
KO-148-D.....	\$145.00
SC-137-185-D.....	\$145.00
SC-069-185-D.....	\$145.00
SC-263-185-D.....	\$145.00
SC-265-185-D.....	\$145.00



We consider it a unique opportunity to cast a chimpanzee skull with the calvarium cut. To also have the associated brain and endocast available offers a rare opportunity to further study this important primate.

Chimpanzee Male, Calvarium Cut
Pan troglodytes
 8 1/4" L, 5 1/2" W, 6 1/4" H
 BC-292 \$279.00



Chimpanzee Male, Brain
Pan troglodytes
 4 1/2" L, 3 1/2" W, 3 1/2" H
 KO-292-B \$210.00

Chimpanzee Male, Endocast
Pan troglodytes
 4 3/4" L, 3 1/2" W, 3 1/4" H
 KO-292-E \$139.00

PRIMATE ENDOCASTS

1. Gorilla, Adult Male
Gorilla gorilla
 5" L, 3 3/4" W, 3 1/4" H
 KO-229 \$139.00

2. Bonobo, Adult Male
Pan paniscus
 4 1/2" L, 3 3/4" W, 3 1/4" H
 KO-227 \$139.00

3. Bornean Orangutan, Adult Male
Pongo pygmaeus
 4 1/2" L, 3 3/4" W, 3 1/4" H
 KO-232 \$139.00

4. Siamang, Adult Male
Symphalangus (Hylobates) syndactylus
 3" L, 2 1/2" W, 2" H
 KO-230 \$139.00

5. Chimpanzee, Adult Female
Pan troglodytes
 4 1/2" L, 3 3/4" W, 3" H
 KO-231 \$139.00

6. Silvery Gibbon, Adult Male
Hylobates moloch
 2 3/4" L, 2 3/4" W, 1 3/4" H
 KO-228 \$139.00

Cranial endocasts provide a representation of the area inside the cranial cavity, which allows for an estimate of the volume of the brain. They provide the details of the outer surface of the brain, taking into account that the space within the cavity is also filled with soft tissue structures such as blood vessels and nerves. Because endocasts are useful for comparing relative sizes of different areas of the brain, they are instrumental in evolutionary study. We would like to thank Ralph Holloway, Professor of Anthropology at Columbia University, for the opportunity to cast these rare endocasts.



www.boneclones.com



Bone Clones Osteological Reproductions

PREMIUM CHIMPANZEE
AND ENDOCASTS

77

ARTICULATED, RIGID HANDS AND FEET



Human Hand, Adult Male
Homo sapiens
7"
H-02-M.....\$135.00



Human Foot, Adult Male
Homo sapiens
9"
F-02-M.....\$135.00



Human Foot, 5-year-old Child
Homo sapiens
4 3/4"
KO-185.....\$98.00



Human Hand, 5-year-old Child
Homo sapiens
4"
KO-184.....\$98.00



Bonobo Hand
Pan paniscus
9"
KO-124-A...\$145.00



Bonobo Foot
Pan paniscus
8"
KO-125-A...\$145.00



Siamang Hand
Symphalangus syndactylus 6"
KO-149-A...\$135.00



Siamang Foot
Symphalangus syndactylus 5 3/4"
KO-148-A...\$135.00



Chimpanzee Hand
Pan troglodytes
10"
KO-303-A...\$145.00



Chimpanzee Foot
Pan troglodytes
9"
KO-304-A...\$145.00



Gorilla Hand
Gorilla gorilla
11"
KO-208-A\$145.00



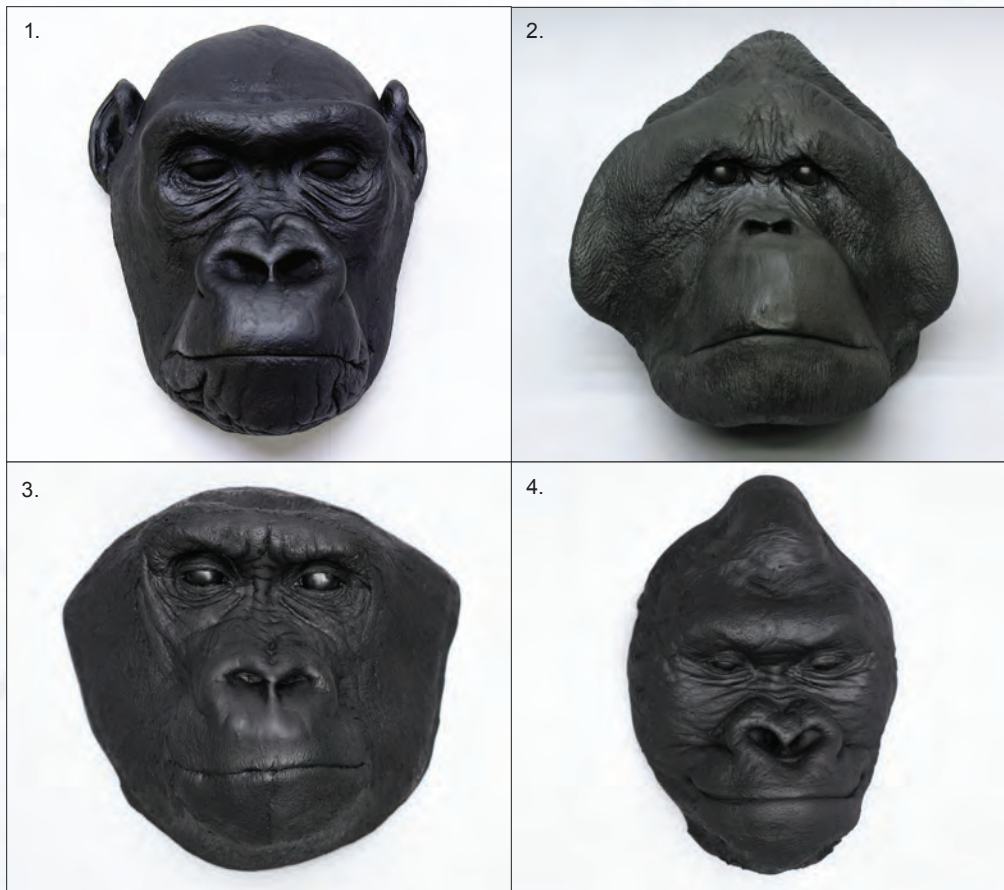
Gorilla Foot
Gorilla gorilla
13"
KO-209-A\$145.00



Orangutan Hand
Pongo abelii
13 3/4"
KO-202-A\$145.00



Orangutan Foot
Pongo abelii
14 1/4"
KO-204-A\$145.00



LIFE CASTS

1. Gorilla Head, Female

Gorilla gorilla
10" L, 8" W, 5" H

LC-25.....\$140.00

2. Orangutan Head, Male

Pongo abelii
16 1/2" L, 12" W, 8" H

LC-26.....\$155.00

3. Gorilla Head, Female

Gorilla gorilla
9" L, 9" W, 5" H

LC-22.....\$140.00

4. Gorilla Head, Male

Gorilla gorilla
12" L, 8" W, 5" H

LC-21.....\$140.00

Human Hand, Right, Male

Homo sapiens
7 1/2" x 4"

LC-17.....\$140.00



5. Gorilla Hand, Left, Male

Gorilla gorilla
12"

LC-05.....\$175.00

6. Orangutan Hand, Left, Male

Pongo abelii
12"

LC-07.....\$185.00

7. Gorilla Hand, Right, Female

Gorilla gorilla
10"

LC-09.....\$155.00

8. Orangutan Hand, Right, Female

Pongo pygmaeus
9 1/2"

LC-11.....\$155.00

9. Gorilla Foot, Right, Male

Gorilla gorilla
10"

LC-06.....\$185.00

10. Orangutan Foot, Right, Male

Pongo abelii
12"

LC-08.....\$185.00

11. Gorilla Foot, Left, Female

Gorilla gorilla
10"

LC-10.....\$155.00

12. Orangutan Foot, Left, Female

Pongo pygmaeus
9"

LC-12.....\$155.00

13. Chimpanzee Hand, Right, Male

Pan troglodytes
12"

LC-23.....\$140.00

14. Gibbon Hand, Left

Hylobates lar
4 1/2"

LC-13.....\$70.00

15. Gibbon Foot, Right

Hylobates lar
4 1/2"

LC-14.....\$70.00

16. Chimpanzee Foot, Right, Male

Pan troglodytes
10"

LC-24.....\$140.00



Order on our website: www.boneclones.com
 Order by phone: 818-709-7991 or 800-914-0091 (USA customers only)
 Order by Fax: 818-709-7993 Order by e-mail: order@boneclones.com
 Order by mail: Bone Clones, Inc. • 21416 Chase Street #1
 Canoga Park, CA 91304 • U.S.A.



Payment:



We accept Visa, Mastercard, American Express and Discover. Checks or money orders can be mailed to us, made payable to Bone Clones. Allow 10 days for personal checks to clear. Sorry, we do not ship COD.

Educational institutions can fax, mail or e-mail us your Purchase Order.

Shipping:

Your address: Please provide us with your shipping and billing address (if different), email, and a daytime phone number.

Our preferred shipping method is to a street address. If you have special shipping needs, please advise us.

Specify: Item #, description, quantity and price. Add shipping charges, per chart below. California residents, add Sales Tax.

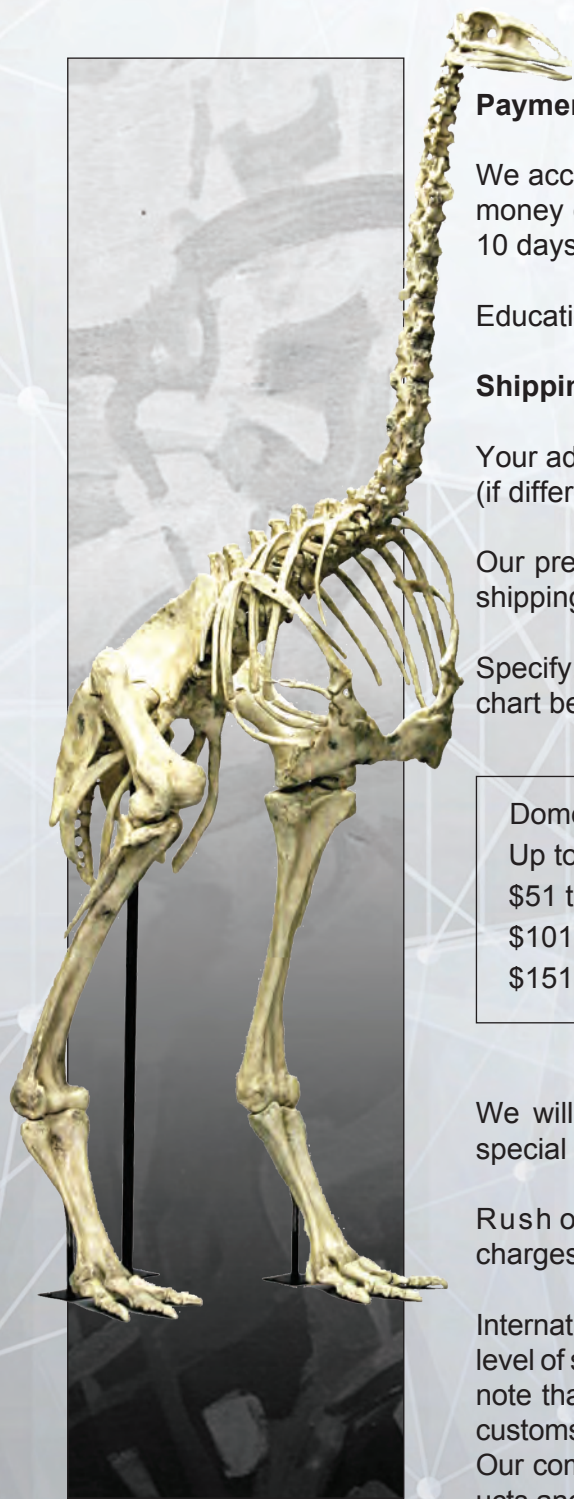
Domestic Ground Charges: (Additional charges apply to Hawaii and Alaska)

Up to \$50	\$9.95	\$201 to \$250.....	\$20.00
\$51 to \$100.....	\$11.95	\$251 to \$300.....	\$24.00
\$101 to \$150.....	\$17.00	\$301 to \$400.....	\$28.00
\$151 to \$200.....	\$18.00	Over \$400.....	7% of order

We will be happy to quote you shipping charges for items that require special crating and shipping.

Rush orders: For expedited 2 day air service add \$20.00 to above charges. For next day air service add \$38.00.

International Orders: Shipping charges depend on size, weight and the level of service. We will quote you the shipping and handling charges. Please note that there may be additional charges in the recipient country such as customs duties, VAT taxes, etc., which are the responsibility of the recipient. Our commercial invoice indicates that Bone Clones® are educational products and in some instances, this can impact the charges favorably.

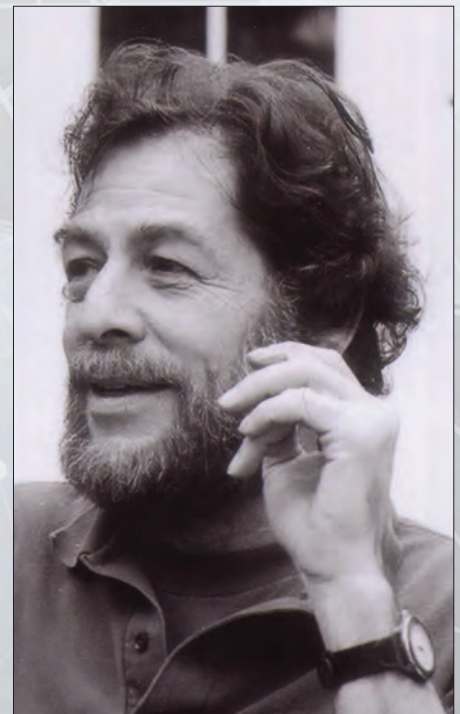


Page Names			
TABLE OF CONTENTS	B		
14 TO 16-MONTH CHILD SKELETON	28		
ADOLESCENT SKELETON	8		
ADVANCED ANATOMY	10-17		
APES AND MANDRILL BABOON	69		
ARDIPITHECUS RAMIDUS			
FOSSIL HOMINID	59		
AXIAL & APPENDICULAR SKELETON	22		
CHILD AND FETAL POSTCRANIAL	29		
CHILD POSTCRANIAL	27		
CHILD SKULLS	24-25		
CHILD SKULLS			
AND SKELETONS	26		
FEMALE ASIAN SKELETON	7		
FEMALE EUROPEAN			
MAXWELL COLLECTION	4-5		
FEMORA	23		
FETAL SKELETONS	31		
FETAL SKULLS	30		
FORENSIC SETS	39		
FORENSICS	40		
FOSSIL HOMINID POSTCRANIAL	62		
FOSSIL HOMINID SETS			
AND ROTATIONAL	60		
FOSSIL HOMINID SKULLS	48-53		
FOSSIL HOMINID TOOLS	63		
H. ERGASTER FOSSIL HOMINID	58		
HAND AND FOOT	21		
HUMAN SKULLS	18-20		
INDRI LEMUR AND PRIMATE ARMS	75		
INTERMEMBRAL SET	74		
LUCY FOSSIL HOMINID	54-55		
MALE ASIAN SKELETON	6		
MALE EUROPEAN			
MAXWELL COLLECTION	2-3		
MONKEYS	66		
MONKEYS AND LEMURS	67		
NEANDERTHAL	56-57		
NEW WORLD MONKEYS	70		
OLD WORLD MONKEYS	71		
PATHOLOGY AND FORENSICS	47		
PATHOLOGY AND TRAUMA	32-37, 41, 46		
PELVIS AND FEMUR SETS	73		
PELVISES AND FEMURS	72		
PREMIUM CHIMPANZEE AND			
ENDOCASTS	77		
PRIMATE GREAT APES	68		
PRIMATE HANDS AND FEET	78		
PRIMATE LIFE CASTS	79		
PRIMATE POSTCRANIAL	76		
PRIMATES	64		
PRIMATES: APES	65		
ROBUST ASIAN SKELETON	9		
SCALE PRIMATE SETS	61		
SKELETON POSTCRANIAL	C		
THE MAXWELL COLLECTION			
PATHOLOGY AND TRAUMA	42-45		
UC DAVIS PATHOLOGY AND TRAUMA	38		
Products			
A.L. 129 1a + 1b	62		
A.L. 288-1	53-55		
A.L. 444-2	53		
Achondroplasia	38		
Aegyptopithecus zeuxis	49		
Alouatta palliata	66		
Amputation	34, 37, 46		
Ankylosing Spondylitis	35		
Aotus trivirgatus	67		
Apteryx australis	23		
ARA-VP-6/500	59		
Ardipithecus ramidus	59		
Arm Articulations	C, 6, 75		
Arthritis	47		
Atapuerca 5	50		
Ateles paniscus	23, 70, 73-76		
Auditory Exostosis	35		
Australopithecus aethiopicus	52		
Australopithecus afarensis	52-55, 61-62, 72		
Australopithecus africanus	52-53, 61-62		
Australopithecus anamensis	62		
Australopithecus boisei	52-53, 61		
Australopithecus robustus	52-53		
Aye-Aye	67		
Baboon, Chacma	66		
Bear, Black	40		
Beauchene Hand and Foot	21		
Bodo	50		
Bone Box, Human Adult	16		
Bone Box, Human Child	27		
Bone Scaling Femur Set	23		
Bonobo	65, 69, 72-73, 75, 77-78		
Bonobo Skeleton	69		
BOU-VP-16/1	48		
Brain, Chimpanzee	77		
Brain, Human	10, 11		
Brain, Orangutan	65		
Broken Hill 1	50		
Bullet Wound Skull, Calvarium Cut	38		
Calicebus torquatus	66		
Callithrix jacchus	67, 74		
Calvarium, Adult	8, 11, 13, 30, 38, 43, 77		
Calvarium, Bullet Hole	38		
Calvarium, Child	24, 26		
Candle wax	35		
Cases	6, 7, 13, 16, 20, 27		
Cebuella pygmaea	67		
Cebus olivaceus	70, 73-76		
Cercopithecus pygerythrus	23, 71, 73-76		
Child Skeletons	26-28		
Child Skulls	24-26		
Child Vertebral Column, 5-year-old	27		
Child Vertebral Column, Scoliosis	46		
Child, 4-year-old Deciduous Teeth	25		
Child, Postcranial, 5-year-old	26-27, 29		
Chimpanzee	14, 62, 64-65, 68, 72-79		
Chimpanzee Arm	75		
Chimpanzee Brain	77		
Chimpanzee Endocast	77		
Chimpanzee Infant	64		
Chimpanzee Knee Joint	62		
Chimpanzee Life Casts	79		
Chimpanzee Skeleton	68		
Chimpanzee, Fetal	64		
Clovis Spearpoint	63		
Comparative Bone Scaling	23		
Comparative Economy Sets	39		
Comparative Long Bones, Adult	2, 4		
Conraua goliath	23		
Cotton-top Tamarin	67		
Cradle Boarding	41		
Cranial Deformation, Artificial	32		
Cribra Orbitalia	34		
Cro-Magnon	48, 61		
Cynocephalus volans	23		
D2700	51		
D2735	51		
Daubentonina madagascariensis	67		
Daynes, Atelier	61		
Dental Abscessing	34		
Diffuse Idiopathic Skeletal Hyperostosis	44		
Dmanisi	51		
DNH 7	53		
Down's Syndrome	45		
Eagle, Harpy	23		
Elongated Skulls	46		
Endocast, Human	11		
Endocast, Non-Human Primate	77		
Epiphysis	29, 45		
Equus caballus	23		
Ethmoid, Adult	12		
Ethmoid, Fetal	31		
Feldhofer	56-57		
Femora	23, 42, 62, 72-74		
Femur, 5-year-old Child	29		
Femur, Amputation	46		
Femur, Homo erectus	62		
Femur, Homo ergaster	58		
Femur, Human Adult	C, 23, 72		
Femur, Human Child	29, 72		
Femur, Osteoporosis	16		
Femur, Osteosarcoma	37		
Femur, Primate	72-73		
Femur, Rickets	37		
Fetal Human Cranial Bones	31		
Fetal Human Postcranial Bones	29		
Fetal Skeleton, Chimpanzee	64		
Fetal Skeleton, Human	31		
Fetal Skeleton, Orangutan	64		
Fetal Skull, Human	30		
Fetal Skull, Human, Calvarium Cut	30		
Flores Skull LB1	50		
Flying Lemur	23		
Foot, Beauchene	21		
Foot, Homo habilis	62		
Foot, Human	C, 21, 78		
Foot, Magnetic	21		
Foot, Primate	76, 78		
Forensics	32-47		
Forensics, Blunt Force Trauma	42-43		
Forensics, Bullet Wound Skull, Calvarium	38		
Forensics, Comminuted Fracture	35		
Forensics, Fracture, Surgical Repair	46		
Forensics, Gunshot-wounds	41-43		
Forensics, Hammer Blows	41		
Forensics, Healed Fracture	33-37, 40		
Forensics, Machete-wound	40		
Forensics, Parry Fracture	36		
Forensics, Rib, Bullet Embedded	40		
Forensics, Shotgun-wound Skull	41, 43		
Forensics, Skull Fracture	33		
Forensics, Skull Fragment Set	43		
Forensics, Skull with Ax.	40		
Forensics, Small-Caliber-wound Skull	41		
Fossil Hominids	48-63		
Fossil Hominid Skull Set	60-61		
Fracture, Comminuted	40		
Fracture, Femoric Hip	46		
Fracture, Healed	33-37, 40		
Fracture, Healed, Poorly Aligned	45		
Fracture, Parry	36		
Fracture, Surgically Repaired	46		
Galago senegalensis	74		
Gibbon Life Casts	79		
Gibbon, Silvery	77		
Gibbon, White-handed	65		
Gibraltar 1	50		
Goliath Frog	23		
Gorilla	14, 65, 68, 72-79		
Gorilla gorilla	14, 65, 68, 72-79		



Gorilla Life Casts.....	79	Human Skull, 7-piece.....	15	Hyperostosis Frontalis Interna.....	43
Gorilla Skeleton.....	68	Human Skull, 7-piece Color-Coded.....	15	Incus.....	12
Gorilla, Mountain.....	65	Human Skull, Achondroplasia Dwarf.....	38	Indri indri.....	67, 74-75
GSP 15000.....	49	Human Skull, Adolescent.....	8	Kebara 2.....	56-57
Gunshot-wound, Human Skull.....	41-42	Human Skull, Adolescent Calvarium.....	8	Kennewick Man.....	49
Hand, Beauchene.....	21	Human Skull, Adult.....	18-20, 45	<i>Kenyanthropus platyops</i>	52
Hand, Human.....	C, 17, 21, 76	Human Skull, Blunt Force Trauma.....	42	Kiwi.....	23
Hand, Magnetic.....	21	Human Skull, Bullet Wound, Calvarium.....	38	Knee Joints.....	62
Hand, Mandrill Baboon.....	69	Human Skull, Bullet-wound.....	41	KNM-ER 406.....	52
Hand, Primate.....	76, 78	Human Skull, Button Osteoma.....	33	KNM-ER 732.....	53
Hanuman Langur.....	66	Human Skull, Child.....	24-26	KNM-ER 1470.....	51
<i>Harpia harpyja</i>	23	Human Skull, Down's Syndrome.....	45	KNM-ER 1481.....	62
Herto.....	48	Human Skull, Elderly Male.....	41	KNM-ER 1813.....	51
Hominids, Scale Busts.....	61	Human Skull, Elongated.....	46	KNM-ER 3733.....	51
<i>Homo antecessor</i>	51	Human Skull, Facial Reconstruction.....	42	KNM-WT 15000.....	51, 58, 72
<i>Homo erectus</i>	51, 62	Human Skull, Female African-American.....	19	KNM-WT 17000.....	52
<i>Homo ergaster</i>	51, 58, 72	Human Skull, Female American Indian.....	18	KNM-WT 40000.....	52
<i>Homo ergaster</i> Skeleton.....	58	Human Skull, Female Asian.....	18-19	Komodo.....	23
<i>Homo floresiensis</i>	50	Human Skull, Female European.....	19	La Chapelle-aux-Saints.....	50
<i>Homo habilis</i>	51, 61-62	Human Skull, Female Euro. Calvarium.....	11	La Ferrassie 1.....	50, 56-57
<i>Homo heidelbergensis</i>	50	Human Skull, Female, Masculinized.....	41	Leg, Human.....	6
<i>Homo neanderthalensis</i>	14, 50, 56-57, 61-63	Human Skull, Fetal.....	30	Leishmaniasis.....	32
<i>Homo rudolfensis</i>	51	Human Skull, Gunshot-wound.....	38, 41-42	<i>Lemur catta</i>	67, 74
<i>Homo sapiens idaltu</i>	48	Human Skull, Half.....	15	Lemur, Indri.....	67, 74-75
Horse.....	23	Human Skull, Half, Color-coded.....	15	Lemur, Indri Skeleton.....	75
Hrdlicka Paleopathology Collection.....	33	Human Skull, Hammer Blows.....	41	Lemur, Mouse.....	67
Human Adolescent.....	8, 45	Human Skull, Healed Frontal Fracture.....	33	Lemur, Ring-tailed.....	67, 74
Human Analysis Reports.....	B	Human Skull, Healed Parietal Fracture.....	33	Lemur, Sifaka.....	67
Human Arms.....	C, 6-7	Human Skull, Healed Trauma.....	40	Life Casts.....	79
Human Brain.....	10, 11	Human Skull, Leishmaniasis.....	32	<i>Loris tardigradus</i>	67
Human Brain Sections, Magnetic.....	10	Human Skull, Machete-wound.....	40	Loris, Slender.....	67
Human Calvarium, Hyperostosis.....	43	Human Skull, Magnetic.....	14	Loris, Slow.....	67
Human Face, Cribra Orbitalia.....	34	Human Skull, Male African.....	18	Lucy.....	53-55, 72
Human Foot, Adult.....	C, 21, 78	Human Skull, Male African-American.....	19	<i>Macaca mulatta</i>	23, 71, 73-76
Human Foot, Beauchene.....	21	Human Skull, Male Asian.....	18-19	Magnetic Brain.....	10
Human Foot, Magnetic.....	21	Human Skull, Male Asian, Calvarium.....	11	Magnetic Foot.....	21
Human Hand Life Cast.....	79	Human Skull, Male Aust. Aboriginal.....	18	Magnetic Hand.....	21
Human Hand, Beauchene.....	21	Human Skull, Male European.....	19	Magnetic Skull.....	14
Human Hand, Magnetic.....	21	Human Skull, Male Euro. Calvarium.....	11	Malleus.....	12
Human Joint, Elbow.....	17	Human Skull, Male Polynesian.....	19	Mandrill Baboon.....	66, 69, 72-75
Human Joint, Foot.....	17	Human Skull, Medical Study.....	13	Mandrill Baboon Skeleton.....	69
Human Joint, Hand.....	17	Human Skull, Meningioma.....	32	<i>Mandrillus sphinx</i>	66, 69, 72-75
Human Joint, Hip.....	17	Human Skull, Numbered, Calvarium.....	13	Manubrium.....	44
Human Joint, Knee.....	17, 62	Human Skull, Porotic Hyperostosis.....	33	Marmoset, Common.....	67, 74
Human Joint, Shoulder.....	17	Human Skull, Robust Male Asian.....	9, 18	Marmoset, Pygmy.....	67
Human Legs.....	C, 6-7	Human Skull, Roman Gladiator.....	41	Maxwell Museum.....	2-5, 31, 42-45
Human Male Femur.....	72	Human Skull, Scaphocephalic.....	41	Meningioma.....	32
Human Maxilla.....	40	Human Skull, Shotgun-wound.....	41	<i>Microcebus murinus</i>	67
Human Ossicles.....	12	Human Skull, Spanish Conquistador.....	40	Microcephaly.....	41
Human Partial Skull, Shotgun Pellets.....	43	Human Skull, Syphilis.....	32	Monkey, Black Spider.....	23, 70, 73-76
Human Pelvis.....	72	Human Skull, Trephined.....	46	Monkey, Black Spider Skeleton.....	70
Human Pelvis, Detachable.....	17	Human Sphenoid, Ethmoid, Temporal.....	12	Monkey, Howler.....	66
Human Postcranial, 13-year-old Male.....	45	Human Teeth, Adult Female.....	14	Monkey, Owl.....	67
Human Postcranial, Adult.....	C, 2, 4	Human Teeth, Adult Male.....	14	Monkey, Rhesus Macaque.....	23, 71, 73-76
Human Postcranial, Adult, Pathology.....	44	Human Teeth, Child.....	25	Monkey, Rhesus Macaque Skeleton.....	71
Human Postcranial, Afr. American.....	39	Human Temporal Bone.....	12	Monkey, Saki.....	67
Human Postcranial, Child & Fetal.....	26-29	Human Vertebrae, Occipital Assembly.....	16	Monkey, Squirrel.....	66
Human Rib, Bullet Embedded.....	40	Human Vertebral Column.....	17	Monkey, Titi.....	66
Human Ribs, Cervical.....	44	Human, Anatomically Modern.....	48-49	Monkey, Vervet.....	23, 71, 73-75
Human Ribs, Fused.....	44	Human, Archaic.....	50-51	Monkey, Vervet Skeleton.....	71
Human Skeleton, Achondroplasia.....	38	Human, Postcranial.....	C	Monkey, Weeping Capuchin.....	70, 74-75
Human Skeleton, Adolescent.....	8	Human, Ribs.....	C, 44	Monkey, Weeping Capuchin Skeleton.....	70
Human Skeleton, Child.....	26	<i>Hylobates lar</i>	65, 79	Mrs. Ples.....	52
Human Skeleton, Female Asian.....	7	<i>Hylobates moloch</i>	77	Museum of Man.....	32-37
Human Skeleton, Female European.....	5	Hyoid, Howler Monkey.....	66	Nariokotome Boy.....	51, 58
Human Skeleton, Fetal.....	31	Hyoid, Human Adult.....	C, 2, 4, 14, 44, 56	Neanderthal.....	14, 50, 56-57, 61-63
Human Skeleton, Male Asian.....	6	Hyoid, Human Child.....	14	Neanderthal Tools.....	63
Human Skeleton, Male European.....	2-3	Hyoid, Neanderthal.....	56	<i>Nycticebus coucang</i>	67
Human Skeleton, Partial 13-year-old.....	45	Hyoid, Ossified.....	14	Oase 1 and 2.....	48
Human Skeleton, Robust Male.....	9	Hyoid, Primate.....	14	OH 5.....	52
Human Skull Set.....	20	Hyperostosis.....	42-44	OH 7.....	51

OH-8.....	62	Scaphocephaly.....	41	Thyroid	44
OH 24	51	Scoliosis	46	Tools, Neanderthal	63
Orangutan	14, 64-65 68, 72-78	<i>Semnopithecus entellus</i>	66	Toumai.....	53
Orangutan Brain.....	65	Senegal Bushbaby.....	74	Trauma	32-47
Orangutan Infant	64	Set, 13-year-old Postcranial.....	45	Trauma, Amputation	34, 37, 46
Orangutan Life Casts.....	79	Set, Comparative Bone Scaling	23	Trauma, Blunt Force	42-43
Orangutan Skeleton.....	68	Set, Comparative Neanderthal, Modern..	57	Trauma, Bullet Wound Skull, Calvarium	38
Orangutan, Fetal	64	Set, Economy Adult African-American...	39	Trauma, Femoric Hip Fracture.....	46
<i>Ornithorhynchus anatinus</i>	23	Set, Economy Adult Asian	39	Trauma, Fracture, Surgical Repair	46
Ossicles	12	Set, Economy Child	39	Trauma, Gunshot-wound Skull.....	41-43
Ossification.....	44	Set, Fetal Chimpanzee.....	64	Trauma, Hammer Blows	41
Osteoarthritis.....	36	Set, Fetal Human	29-31	Trauma, Healed Fractures.....	33-37, 40
Osteoma	33	Set, Fetal Orangutan.....	64	Trauma, Hip Fracture	36
Osteoporosis	16	Set, Forensic.....	39-40	Trauma, Human Rib, Bullet Embedded..	40
Osteosarcoma	37	Set, Fossil Hominid Skulls	60-61	Trauma, Machete-wound	40
<i>Pan paniscus</i>	65, 69, 72-73, 75, 77-78	Set, Fossil Hominid Tools	63	Trauma, Parry Fracture	36
<i>Pan troglodytes</i>	14, 62, 64-65, 68, 72-79	Set, Human Child, Archaic and Modern..	27	Trauma, Poorly Healed Fracture	45
<i>Papio ursinus</i>	66	Set, Human Humerus, Scapula, Clavicle..	C	Trauma, Shotgun-wound Skull	41, 43
<i>Paranthropus aethiopicus</i>	52	Set, Human Male Pathology.....	44	Trauma, Skull Fracture	33
<i>Paranthropus boisei</i>	52-53, 61	Set, Human Ossicles	12	Trauma, Skull Fragment Set	43
<i>Paranthropus robustus</i>	52-53	Set, Human Skull Fragments, Trauma...	43	Trauma, Skull with Ax	40
Pathology	32-47	Set, Human Skulls.....	20	Trauma, Small-Caliber-wound Skull	41
Pathology, Achondroplasia.....	38	Set, Innominate and Femur.....	76	Trephination.....	46
Pathology, Button Osteoma.....	33	Set, Innominate and Femur, Trauma.....	42	Tuberculosis	35
Pathology, Cribra Orbitalia.....	34	Set, Intermembral.....	74	Tumor, Button Osteoma	33
Pathology, Dental Abscessing	34	Set, Osteoporosis	16	Tumor, Osteosarcoma	37
Pathology, DISH	44	Set, Pelvis and Femur.....	73	Turkana Boy.....	51, 58
Pathology, Down's Syndrome	45	Set, Postcranial Fetal Bones	29	UC Davis	38
Pathology, Human Sternum.....	46	Set, Primate Femurs	72-73	<i>Ursus americanus</i>	40
Pathology, Hyperostosis	42-44	Set, Primate Hyoids	14	<i>Varanus komodoensis</i>	23
Pathology, Leishmaniasis	32	Set, Primate Innominate and Femur	76	Vertebrae, Aging Series.....	47
Pathology, Meningioma.....	32	Set, Primate Metatarsals	62	Vertebrae, Arthritic.....	47
Pathology, Ossified Hyoid	44	Set, Primate Pectoral	76	Vertebrae, Fused	44
Pathology, Osteoarthritis	36	Set, Primate Skulls.....	64, 67	Vertebrae.....	C, 16-17, 27, 35, 44, 46-47
Pathology, Osteosarcoma.....	37	Set, Small Primate Skulls.....	67	Vertebrae, Scoliosis.....	46
Pathology, Pits of Parturition	39	Set, Sphenoid, Ethmoid, Temporal	12	Vertebrae, Sets	C
Pathology, Porotic Hyperostosis	33	Set, Stone Tools	63	<i>Zinjanthropus boisei</i>	52
Pathology, Pseudoarthrosis	45	Set, Vertebrae	C, 47		
Pathology, Rickets	37	SGS-UM 2009-002	49		
Pathology, Scaphocephaly	41	Shanidar 1	62		
Pathology, Scoliosis	46	Shotgun-wound.....	43		
Pathology, Spina Bifida Occulta.....	36	Siamang	14, 65, 69, 72-78		
Pathology, Squatting Facet.....	34	Siamang Skeleton	69		
Pathology, Syphilis	32	<i>Sivapithecus indicus</i>	49		
Pathology, Tuberculosis.....	35	SK 48	52		
Peking Man	51	SK 54	52		
Pelvis, Human Adult	45, 72	Skhul 5 Male	48		
Pelvis, Human Child	72	<i>Smilodon fatalis (californicus)</i>	23		
Pelvis, Primate.....	72-73	Sphenoid, Adult.....	12		
Pitldown Man	50	Sphenoid, Fetal	31		
<i>Pithecia pithecia</i>	67	Spina Bifida Occulta.....	36		
Pits of Parturition.....	39	Squatting Facet	34		
Platypus	23	Stanford-Meyer Osteopathology	36-37		
<i>Pongo abelii</i>	14, 64-65, 68, 72-74, 76, 78-79	Stapes.....	12		
<i>Pongo pygmaeus</i>	64-65, 77, 79	Storage Bag for Skulls	20		
Porotic Hyperostosis	33	Sts 5.....	52		
Primate Arm Articulations	75	Sts 52.....	53		
Primate Skull Set.....	60-61, 64	Sts 71.....	53		
<i>Proconsul africanus</i>	49	Surfer's Ear	35		
<i>Propithecus verreauxi</i>	67	<i>Symphalangus syndactylus</i> ... 14, 65, 69, 72-78			
Pseudoarthrosis.....	45	Syphilis.....	32		
Ribs, Human	C	Tarsier.....	67		
Ribs, Human, Fused	44	<i>Tarsius syrichta</i>	67		
Rickets.....	37	Taung Child.....	52		
Rotational Series.....	60	Teeth, Human Adult Female.....	14		
<i>Saadanius hijazensis</i>	49	Teeth, Human Adult Male	14		
Sabertooth Cat	23	Teeth, Human Child	25		
<i>Saguinus oedipus</i>	67	Temporal Bone, Adult.....	12, 35		
<i>Sahelanthropus tchadensis</i>	53	Temporal Bone, Fetal.....	31		
<i>Saimiri sciureus</i>	66	Teshik-Tash Child.....	50		
Sangiran 17.....	51	The Hobbit	50		

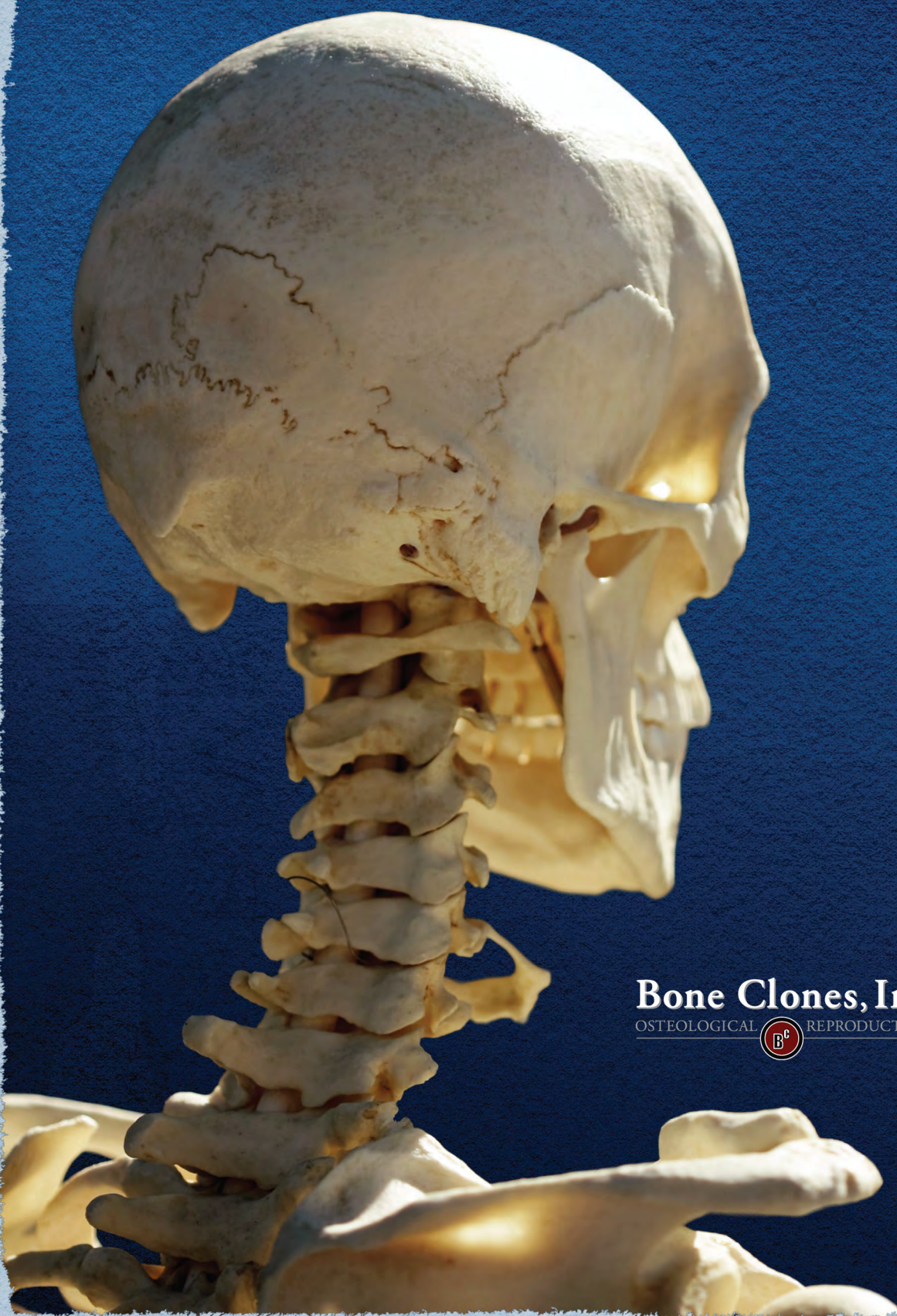


Bone Clones®
Co-Founder, Dave Kronen





BONE CLONES® 2014 HUMAN ANATOMY AND ANTHROPOLOGY



Bone Clones, Inc.
OSTEOLOGICAL  REPRODUCTIONS

\$8.95

21416 Chase St. #1 Canoga Park, CA 91304 U.S.A

©2014 Bone Clones, Inc. All Rights Reserved