

# Bone Clones<sup>®</sup>

800-914-0091



[www.boneclones.com](http://www.boneclones.com)

OSTEOLOGICAL REPRODUCTIONS

## Assembly Instructions:

BH-016 Australopithecus africanus Skull (Taung Child)

and

S-BH-016 Display Stand (sold separately)



Bone Clones, Inc. 9200 Eton Ave., Chatsworth, CA 91311  
Phone: 818-709-7991 Fax: 818-709-7993  
email: [info@boneclones.com](mailto:info@boneclones.com) website: [www.boneclones.com](http://www.boneclones.com)

Assembly Instructions  
BH-016 Australopithecus africanus Skull (Taung Child)

All photos © Bone Clones, Inc.



**BH-016 Parts:**

- Cranium
- Mandible
- Endocast

**S-BH-016 Parts:**

- Metal Stand
- Cradle (Black)

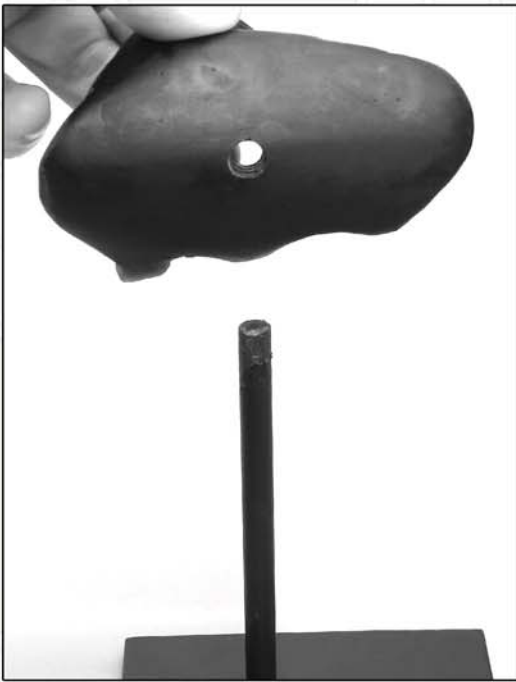


Assembly Instructions  
BH-016 Australopithecus africanus Skull (Taung Child)

All photos © Bone Clones, Inc.

- Step 1

Place the cradle on the metal stand as shown.



- Step 2

Place the mandible on the cradle as shown.



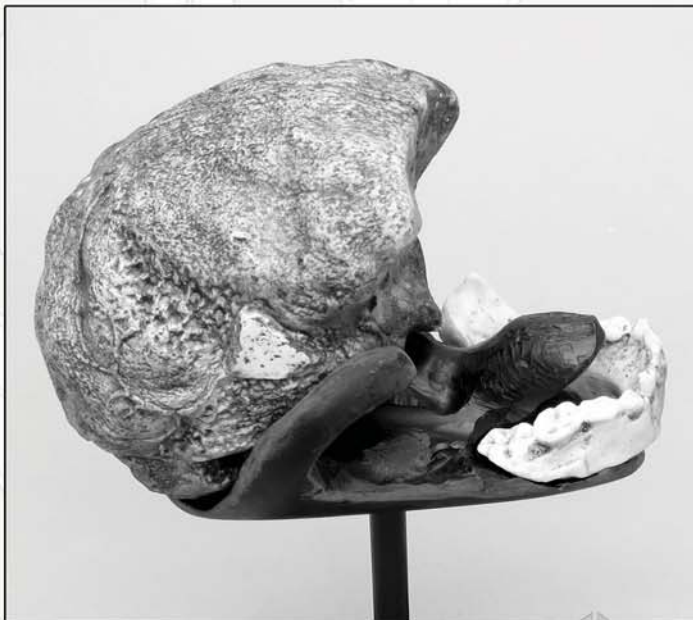
Assembly Instructions  
BH-016 Australopithecus africanus Skull (Taung Child)

All photos © Bone Clones, Inc.

- Step 3

Place the endocast on the cradle.

Note in the photos below how the endocast rests on the cradle.



Assembly Instructions  
BH-016 Australopithecus africanus Skull (Taung Child)

All photos © Bone Clones, Inc.

• Step 4

Place the cranium on the cradle. Note in the photo below how the zygomatic arch slides under the extension of the cradle.

